

American Express Company.

FORWARDERS TO ALL PARTS OF THE WORLD.

Local Office, Elm Square.

**Service between BOSTON, NEW YORK, SOUTH and WEST
UNEXCELLED.**

SIXTEEN TRAINS DAILY.

From Boston: 7.30, 10.25, 12.00 A. M., 12.30, 2.15,
3.20, 5.00 and 7.00 P. M.

From the East and North: Due in Andover, 7.39, 7.46,
10.33, 11.10 A. M., 12.16, 12.37, 4.25, 7.11 P. M.

Money Orders. Travelers' Cheques. Money Transferred by Telegraph.

N. G. GLEASON, Agent.

ANDERSON & BOWMAN, HORSE SHOERS —AND— JOBBERS.

All kinds of Interfering and Overreaching
Horses Shod on Scientific Principles.

CARRIAGE WORK

Of all kinds done at short notice.



SHOP, PARK STREET, ANDOVER, MASS.

HUGH O'DONNELL,

—PROPRIETOR—
**Ballard Vale & Lawrence
EXPRESS.**

Lawrence Office, 473 Essex St.
Boston Office, 30 Court Square.

Transferring to all parts of the
United States and Canada,
and all other parts of
the world.

Ballard Vale Office, Center St.





JOHN H. PLAYDEN,
— Florist —

—AND—

Grower of Early Vegetable Plants.

CUT FLOWERS,

Floral Designs, &c.

Chrysanthemums in Endless Variety.

CHOICE PANSIES OUR SPECIALTY.

Greenhouse, Lowell Street, Frye Village.

R. J. SHERRY,

—DEALER IN—

Choice Meats and Provisions.

VEGETABLES OF ALL KINDS IN THEIR SEASON.

Tewksbury Street,

Near Depot,

BALLARD VALE.

“The only advertising medium for Andover.”

✦ THE ✦

ANDOVER TOWNSMAN.

ANDOVER, MASS.

PUBLISHED BY

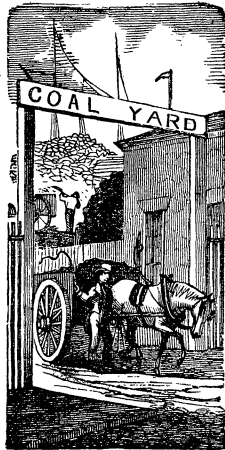
THE ANDOVER PRESS,

The LEADING PRINTERS of ESSEX COUNTY.

JOHN N. COLE, Treasurer and Manager.

FRANK E. GLEASON,

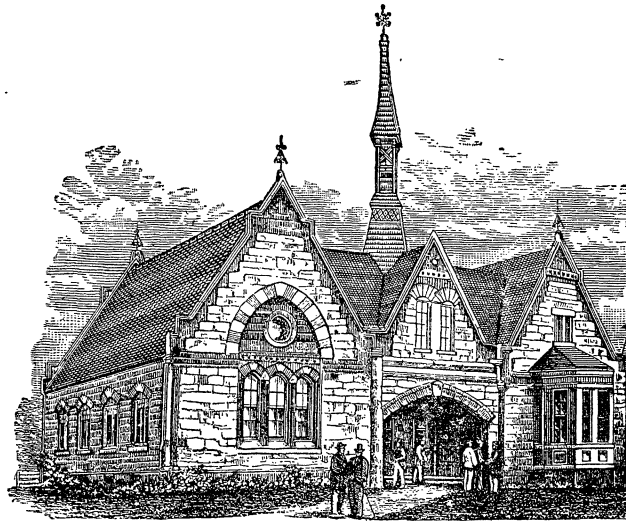
(Successor to JOHN CORNELL,)



— DEALER IN —

COAL, * *
WOOD, *
HAY *
* STRAW.

*Office, CARTER'S BUILDING, Main Street.
Coal Yard, Railroad Street, near Freight Station.
ANDOVER.*



C. B. MASON,
Contractor and Builder, ♦ ♦ Andover, Mass.
Plans of Cottages furnished. Builders' Supplies in stock. Repairing in all its branches.
Shop and Yard, Old Abbott Store Building, Main Street.
RESIDENCE, ABBOT STREET.

B

P. J. DALY,

—DEALER IN—



Dry Goods

—AND—

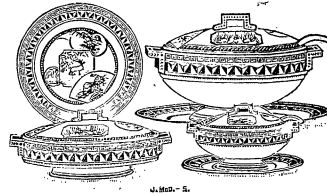
Groceries,
Boots, Shoes & Rubbers

Of all descriptions,
At Reasonable Prices.

CHOICE BRANDS FLOUR,
GRAIN,

Crockery, Glassware,

And everything usually found in a
General Store.

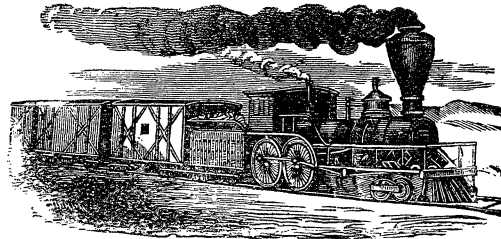


THE NEW BLOCK, ELM SQUARE.

G. W. CHANDLER,

—DEALER IN—

COAL AND WOOD.



*All the best qualities of ANTHRACITE COAL
constantly on hand.*

*All orders for Cumberland and Lehigh Coal will
receive prompt attention.*

TEAMING AND JOBBING

Of all kinds done by experienced men, at short notice.

Office at J. H. Chandler's Periodical Store,
Main Street, Andover.

C

Artistic Clothing !



That which adapts itself perfectly to the form and gratifies the taste is the kind we are now displaying.

Everything New, Stylish and Attractive,

And added to that a guarantee of durability.

DO YOU NEED a SUIT or OVERCOAT?

If you do, and you have not made up your mind as to its character, come and see us, and let our offerings decide you.

HAMEL & CLOUTIER,

—DEALERS IN—

**Fine Clothing, Gents' Furnishings, Hats,
TRUNKS, VALISES, ETC.**

405 ESSEX STREET, LAWRENCE.
(Sign of the Golden Trunk.)

D

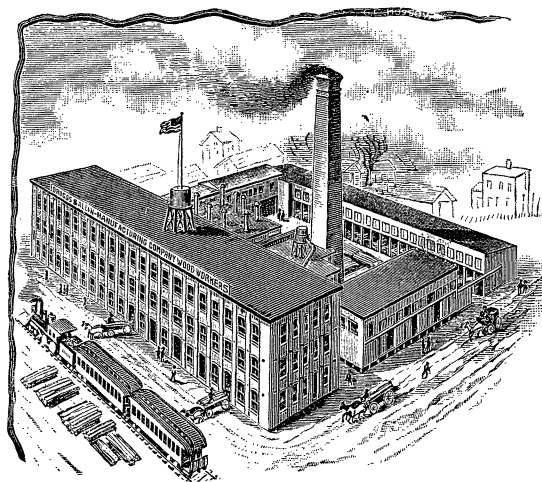
BRIGGS & ALLYN Telephone 62
MFG. COMPANY
 INCORPORATED

DOORS.
 SASH & BLINDS.
 TANKS & VATS.
 Church & Office Finish
 STAIR BUILDING
 KILN DRIED LUMBER

Wood Workers.
Mantels and
Wood Carving

10 to 20 Winter St.
 and
 No. 2 Melvin Street
 Lawrence, Mass. 189

B
U
I
L
D
E
R
S



S
U
P
P
L
I
E
S.

New Brick Factory on Winter Street,
 Near **Boston and Maine Passenger Station**,
 LAWRENCE, MASS.

E

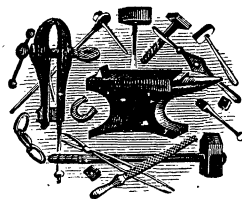
❄ **TREAT** ❄
HARDWARE AND SUPPLY CO.

Headquarters for

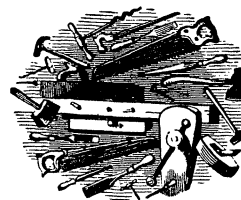
HARDWARE, CUTLERY,

❄ **Cordage,** ❄

PAINTS, OILS,



IRON
—AND—
STEEL,



—ALSO,—

Blacksmiths', Carpenters' and Machinists'

TOOLS,

—AND—

MILL SUPPLIES.

582 & 584 Essex Street, Lawrence, Mass.

J. M. SMITH, General Manager.

F

❖ ESTABLISHED 1876 ❖
—BY—
FRANK EMERSON.



Compounding Physicians' Prescriptions made a Specialty
AT ALL HOURS, DAY OR NIGHT.

A competent person in attendance at night to answer all calls of necessity. This DEPARTMENT is complete, and while the best service is rendered, the prices are consistent.

A LARGE STOCK OF

Fancy Goods, Patent Medicines,
HOMEOPATHIC REMEDIES,

Pocket • Cutlery, • Razors • and • Scissors,
CONFECTIONERY AND CIGARS, WINES AND LIQUORS,
Trusses, Elastic Hose, Shoulder Braces,
Supporters, Suspensory Bandages, Crutches,
Hot Water Bottles or Bags, Ice Bags,
All sorts of Syringes, Urinals, Bed Pans,
Baker's Douches, Atomizers, &c.

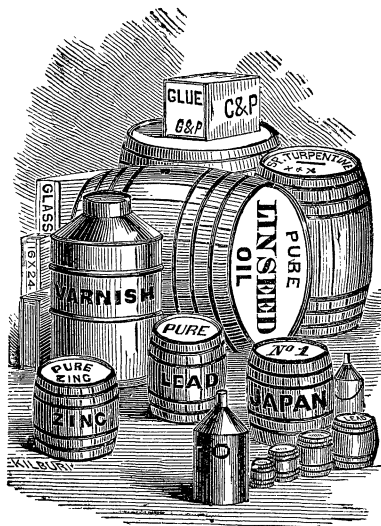
PROPRIETARY ARTICLES.

Emerson's Worm Syrup, Sarsaparilla, Glycerine Lotion,
Botanic Cough Syrup, Vegetable Liver Pills,
Cyclone Corn Cure, Beef, Wine and Iron,
and Carbolic Healing Salvé.

122 BROADWAY, SOUTH LAWRENCE, MASS.

G

N. S. S. TOMPKINS,
(Successor to TOMPKINS & MANN,)



PAINTS,
 OILS,
 VARNISHES,
 Chemicals
 —AND—
 Dye-Stuffs.

191 ESSEX STREET, LAWRENCE.

GEO. W. COLBURN & CO.

* ART *
 NOVELTIES.

—AND—
ALBUMS

—AND—
BIBLES.

Old
 Engravings
 Carefully
 Restored.

Practical Gilders

—AND—

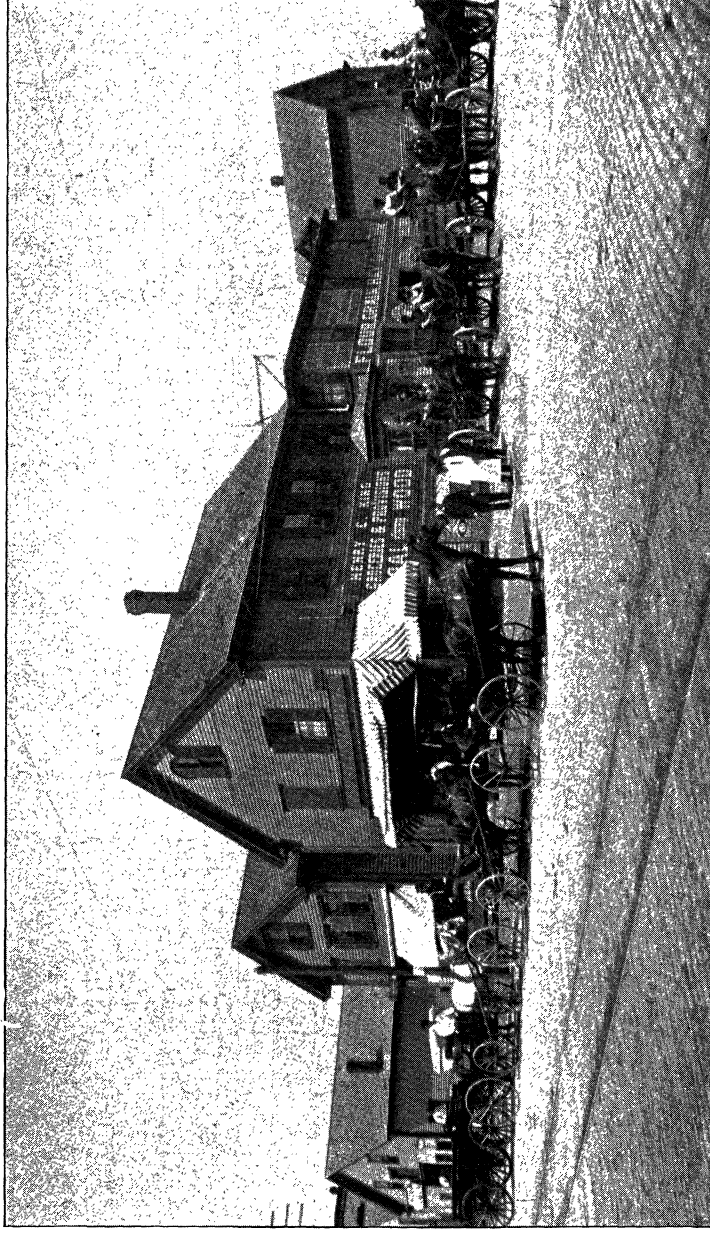
PICTURE FRAME MAKERS.

A choice line of
 Engravings, Etchings,
 Water Color Paintings,
 Etc., constantly on hand.

STATIONERS AND FANCY GOODS DEALERS.

281 Essex St., Lawrence, Mass.

H



HENRY C. KING, 106 SOUTH BROADWAY, LAWRENCE. (See also page K.)

(Continued from opposite page.)

HENRY C. KING,
—DEALER IN—
CHOICE FAMILY GROCERIES
—AND—
PROVISIONS,
Wood, Coal, Hay, Grain,
LIME AND CEMENT,

Also, Wheat, Barley, Scraps, Oyster Shells, etc.

Prepared Wood and Kindlings.

106 South Broadway, Lawrence, Mass.

Telephone No. 200.

Goods delivered in Andover and North Andover.

(See also opposite page, I.)

Enterprise Portrait Co.,
LAWRENCE, MASS.,

Enlarge Small Pictures

To any size, and finish in

India Ink, Water Colors, Crayon or Oil,

Cheaper, Better, Quicker, than any Copying House in Essex County.

We Guarantee Our Work to be of the Finest Quality.

We keep a full line of

ELEGANT ÷ PORTRAIT ÷ FRAMES

Constantly on hand, and also make

Picture Frames of all kinds to order.

Don't be humbugged by out-of-town parties, but patronize Lawrence industries and deal with a reliable house,

THE ENTERPRISE.

We kindly invite you to visit our Studio at

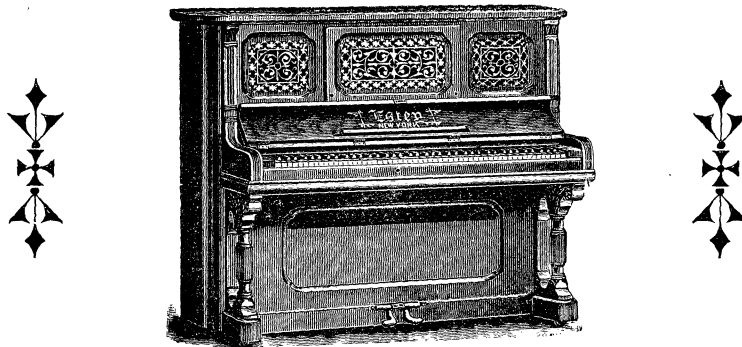
116 BROADWAY, LAWRENCE.

Enterprise Portrait Co.

K

KENNELLY & SYLVESTER,
PIANOS AND ORGANS

For Cash or Easy Payments.



Old Instruments Taken in Exchange.

We have a large stock of

MUSIC AND SMALL MUSICAL MERCHANDISE.

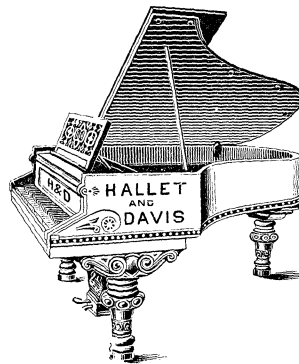
We are prepared to do

PIANO

AND

ORGAN

TUNING,



Repairing,

Polishing,

ETC.,

Including

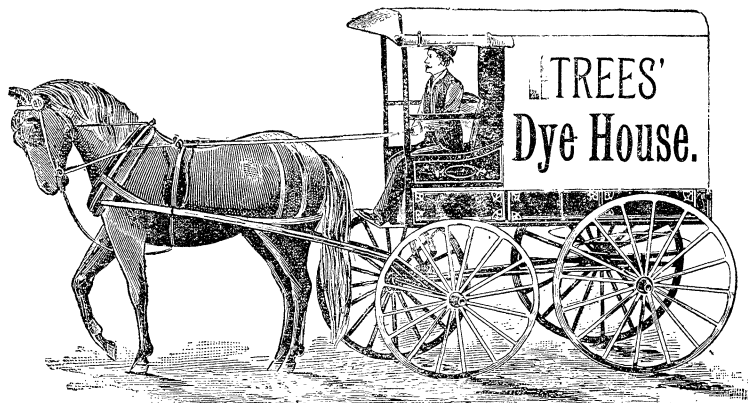
Church Organs,

At short notice and reasonable rates.

CALL ON US AT

248 & 250 ESSEX STREET, LAWRENCE.

L



H. J. TREES' CLOTHES CLEANSING WORKS.

(Established 1849.)

Ladies' or Gents' Garments **CLEANSED OR DYED** in the best possible manner.

Office, 473 Essex Street,

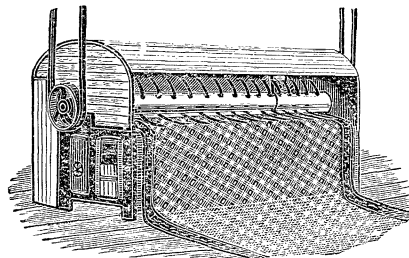
Next to Bicknell Bros.' Store.

DYE HOUSE, 133 LAWRENCE STREET, LAWRENCE, MASS.

TREES' STEAM MACHINE CARPET BEATING WORKS.

133 Lawrence Street.

Office, 473 Essex Street, Lawrence, Mass.



Carpets Taken Up,
Beaten & Laid.

The Only Steam Carpet Machine in the City.

Every Carpet Beaten Separately.

Blankets and Quilts Cleansed.

FEATHER BEDS RENOVATED.

M

**THE NEW T. D. HALLEY
GREENHOUSE !**

338 & 340 Broadway, Lawrence, Mass.



**Cut Flowers,
Floral Designs,
PLANTS,**

And everything that a FIRST-
CLASS GREENHOUSE
keeps for sale.

PRICES THE LOWEST.

Goods delivered in the
Andovers free.

Electric cars pass the door.

J. B. HALLEY, Proprietor.

BOUQUET.

210 Essex Street, Lawrence, Mass.

MILLINERY.

A large stock of

TRIMMED MILLINERY

Constantly on hand.

Special attention given Andover patrons.

Mrs. E. C. MONK.

N

BOSTON STORE.

WILLIAM OSWALD & CO.

Headquarters for

➤	DRY GOODS,
✱	
➤	CARPETS,
✱	
➤	UPHOLSTERY,
✱	
➤	MILLINERY,

—AND—

GENTS' FURNISHING GOODS.

We carry the

✧ LARGEST ✧ ASSORTMENT ✧

In each department of any store outside of Boston.

**The Secret of Our Great Success is
HONEST GOODS AT LOW PRICES !**

When in want of anything in our line, be sure and give us a call.

We can save you money on every purchase.

The only COMPLETE DRY GOODS ESTABLISHMENT in the city.

Don't forget to visit our basement, where we carry a

MAMMOTH STOCK OF

House Furnishings at Popular Low Prices !

WILLIAM OSWALD & CO.,

225, 227, 229, 231, 233 & 235 ESSEX STREET,

LAWRENCE, MASS.

O

HUGO E. DICK,
❖ Plain and Ornamental ❖
JOB * PRINTER.
❖ Color Work a Specialty. ❖

Also, Publisher of
"THE ANZEIGER,"
The only GERMAN NEWSPAPER in Essex and Middlesex Counties.
EIGHT LARGE PAGES of INTERESTING GERMAN READING for only
\$1.00 A YEAR.
118 Essex Street, Lawrence, Mass.

GOULD'S
BAY STATE DYE WORKS.

Ladies' and Cents' Clothing
Dyed, Cleansed and Finished at short notice and in a first-class manner.
KID GLOVES AND FEATHERS A SPECIALTY.

164 Essex Street, Lawrence, Mass.
D. M. LEARY. S. E. GOULD.

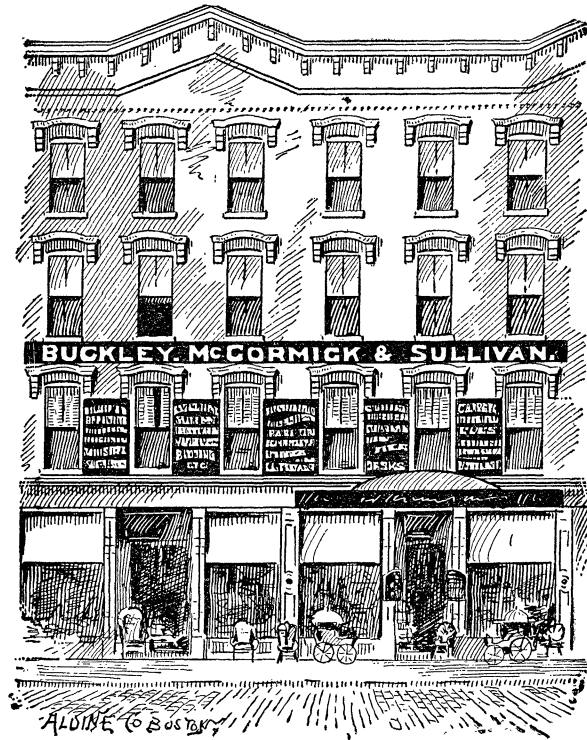
❖ PRICES ❖
—AT THE—
BARGAIN * EMPORIUM

—ARE—
The Lowest in New England!
—FOR—
*Millinery, Dry Goods and Notions, Boots and
Shoes, Patent Medicines and Toilet Articles,
Crockery and House-Furnishing Goods.*

L. C. MOORE & CO.,
302, 304, 308 & 310 ESSEX STREET,
LAWRENCE, MASS.

WHEN ABOUT TO FURNISH A HOUSE
CALL AT THE
Largest Furniture & Carpet Store
IN LAWRENCE.

Four Floors and Basement, covering more than 20,000 Square Feet of Floor Space.

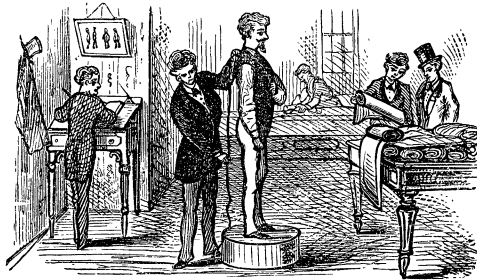


We carry the LARGEST STOCK and LATEST DESIGNS, in FIRST-CLASS HOUSE-FURNISHING GOODS to be found outside of Boston. Our line of CARPETS, LACE CURTAINS, UPHOLSTERY and DRAPERY CLOTHS are unexcelled. We also keep several first-class Upholsterers, and MANUFACTURE all of our UPHOLSTERED FURNITURE. Repairing done at short notice and at low prices, by

BUCKLEY, McCORMICK & SULLIVAN,
218, 220 & 222 ESSEX STREET, LAWRENCE, MASS.

Q

MAX NIDETCH, CUSTOM * TAILOR.



Suits made to order
in all the leading
styles at reason-
able prices.

Always in stock,

Ready-Made Clothing

—FOR—

Men, Boys and Women.

Cleaning, Repairing,
Dyeing and Pressing
AT SHORT NOTICE.

114 ESSEX STEET, LAWRENCE, MASS.

M. A. KEYES, Fashionable * Millinery, Feathers, Trimmings, &c.

KINDLY FAVOR US WITH AN INSPECTION.

103 & 105 Essex Street, Lawrence, Mass.

JOHN SLATER, PRACTICAL PLUMBER & COPPERSMITH.

DEALER IN

Model Ranges, Furnaces,

—AND—

KITCHEN FURNISHING GOODS.

Oil Stoves a Specialty.

*Plumber's Work in all branches done by experi-
enced workmen.*

Cor. Essex and Hampshire Streets, Lawrence.

R

1878

1893

E. C. STIEGLER & CO.,
UPHOLSTERERS

—AND—

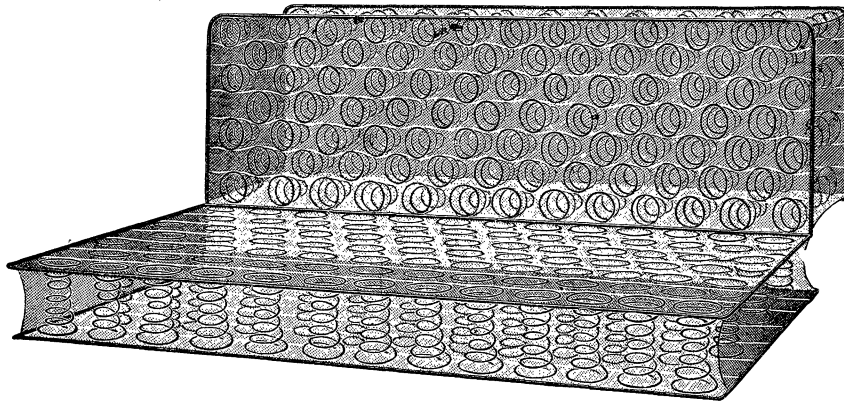
Furniture Dealers.

*Fine Custom Work and Repairing all kinds of
Furniture.*

Special attention given to

REPAIRING & POLISHING ANTIQUE FURNITURE.

The Puritan Spring



Contains 176 springs. We also carry a large assortment of other leading styles, and Bedding of all kinds. A general line of good

FURNITURE

Will always be found at our store, at very low prices.

*Goods called for and delivered in all parts of
Andover, North Andover and vicinity.*

**124 ESSEX STREET, CORNER MILL,
LAWRENCE, MASS.**

S

*Offices and Prices on
Ground Floor!*

*First-class Workman-
ship Only.*

NEAT PRINTING - -

. Is the Kind You Want.

WORK THAT IS DONE IN A SLOVENLY
MANNER, FOR A CHEAP PRICE, IS NOT
THE KIND THAT PAYS EITHER THE
CONSUMER OR THE PRINTER. . . .

*We have the facilities to turn out—and DO turn
out—a VERY FINE GRADE OF PRINTING,
at A REASONABLE PRICE.*

Address all orders for
Printing to - - -

Win. G. Merrill,
Geo. H. Goldsmith.

TELEGRAM PRINTING
HOUSE,

25 & 27 Appleton Street, Lawrence, Mass.

❖ FRANK A. WARREN.

CLOTHING DEALER.

Men's and Boys' Clothing,
Hats, Caps, Underwear,
Gloves, Hosiery,
Umbrellas, &c.

HORSE BLANKETS AND ROBES.

Largest line of **TRUNKS** in Essex County. Sole agent
for the celebrated

CLINTON WALL TRUNK.

The **CLINTON** can be opened without moving from the
wall. Saves damaging the plastering or tearing the carpet.

❖ 187 ESSEX STREET, Lawrence.

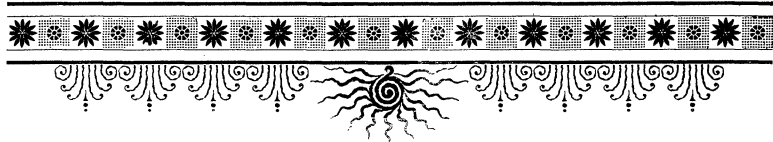
T

Banquet, Piano, Chandelier, Hanging and Table	}	We make a specialty . . of . . LAMPS	{	Silk Shades, WIRE Shade Frames —AND— Anything in this line.
---	---	---	---	---



BALL & MULLEN

✱ 275 Essex Street, ✱
LAWRENCE, MASS.



The Largest and Best Equipped

✱ **WALL PAPER** ✱

. . and . .

WINDOW SHADE

HOUSE IN ESSEX COUNTY.

REMEMBER, anything in this line we can furnish
 you with.

✱ **SEE US?** ✱

U

A. W. Stearns & Co.

309 & 311 Essex St., 270 Common St., Lawrence.

Dress Goods,
Silks,
Trimmings.
Velvets,
Fancy Goods,
Ribbons,
Laces,



Underwear,
Hosiery,
Blankets,
Flannels,
Cloakings,
Furs,
Garments.

"A man who does not know how to learn from his mistakes turns the best schoolmaster out of his life."—*Henry Ward Beecher.*

Possibly, during our existence as a dry goods firm, we have made some mistakes—everybody does. However, instead of blindly pursuing the same course, we have avoided all similar circumstances, and as a result we stand to-day at the head of the class in the Dry-Goods, Cloak and Carpet business.

Here are two mammoth stores, one on Essex street, the other on Common street; nearly 40,000 square feet of floor surface. The two buildings are so connected that they form one great establishment, which for architectural beauty, modern conveniences and business facilities is so far in advance of any other in this vicinity as to completely out-class them all.

An elevator takes you to every floor.

An improved electric cable cash railway "scoots" off with the money, and is back with the change in a jiffy.

Every department is a small store in itself.

Two floors for Carpets, one for Cloaks, and half of another for Underwear—that's the scale that our business is conducted on; you'll find it so if you investigate.

In Dress Novelties we lead. In Garments we lead. In everything we lead. No use to particularize. We are *leaders*, EXPERTS, MASTERS in every branch of the business.

But do you for an instant imagine that we could gain this eminence if the goods, the prices and the treatment were not as they should be?

We'll sell anything in our line as low as anybody in the business—lower, if we can.

We will not handle doubtful goods.

Our clerks are courteous and attentive.

A. W. Stearns & Co.

309 & 311 Essex St., 270 Common St., Lawrence.

V

FRENCH, PUFFER & CO.,
HEADQUARTERS FOR
Solid Silver & Plated Ware.

We also have
A Great Variety

—OF—

DINNER,

Tea,

TOILET

—AND—

LEMONADE

SETS.

H
A
N
G
I
N
G

T
A
B
L
E

L
A
M
P
S

ROGERS BROS.' 1847
KNIVES, FORKS AND SPOONS
A Specialty.

**WE CARRY A LARGE
STOCK,**

Giving our customers a good variety
to choose from.

—ALSO,—

Vases, Ornaments, &c.

A full line of

WHITE WARE
ALWAYS IN STOCK.

389 Essex Street, Lawrence, Mass.

ARCHILLE VALLEY,
❖ ➤ **Photographer,** ➤ ❖
390 Essex Street, Lawrence.

*Small Pictures enlarged to any size and done in
INDIA INK or CRAYON PORTRAIT,
SOLAR PRINTS, BROMIDES,
and OIL FERROTYPES.*

Cabinets \$2.50 a dozen.

*One dozen Extra Finish Panels, including one
16 by 20 Crayon Portrait, for \$3.50.*

4 Tintypes for 50 cents.

W

A. F. RYDER,
Registered & Pharmacist,

Cor. Essex Street and Broadway,

LAWRENCE, MASS.

G. W. DODSON,
— DEALER IN —
STOVES, RANGES, FURNACES,
Etc., Etc.

PLUMBING,
Steam, Water and Gas Pipe Fitting.

— ALSO, —
*Agent for the ARLINGTON RANGE and ECON-
OMY COMBINATION HOT-WATER and HOT-
AIR HEATERS.*

11 Lawrence Street, Lawrence, Mass.

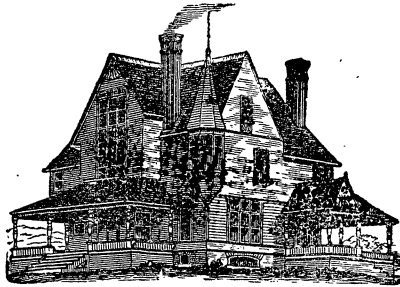
IF YOU WANT ANYTHING IN
CROCKERY * WARE,

In GLASS WARE,
In WOODEN WARE,
• In FIBRE WARE,
In TIN WARE,
Or in GRANITE IRON WARE,

— CALL UPON —
SULLIVAN & WILLARD,
531 ESSEX STREET, LAWRENCE.

X

WILLIAM P. REGAN,



Architect

OFFICE,

Rooms 1 & 2, Essex
Bank Building,
ESSEX STREET,
Lawrence.

Residence, Pearson Street, Andover.

C. A. LAWRENCE & SON,
Portrait and View Photographers.

ALL STYLES OF

Photographs and Ferrotypes.

A SPECIALTY MADE OF

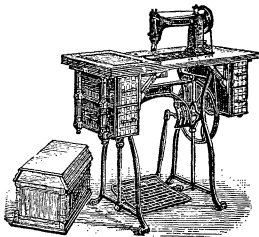
Views of ANDOVER & NORTH ANDOVER.

Satisfaction Guaranteed to All.

181 ESSEX STREET, LAWRENCE, MASS.

NEW HIGH ARM NO. 9
WHEELER & WILSON SEWING MACHINE.

BEST ON EARTH.



Easy, Simple, Durable, Light - Running, and
Noiseless.

It runs forward and backward without breaking
the thread.

We have machines from \$5.00 to \$50.00.

Call and examine our stock before purchasing
elsewhere.

375 Essex Street, Lawrence, Mass.

Y

❁ THORNTON BROS., ❁
FLORISTS.

Fancy Roses.

DESIGNS FOR FUNERALS A SPECIALTY.

Choice Cut Flowers
OF EVERY VARIETY.

PALMS AND DECORATIVE PLANTS.

Trees, Bulbs and Seeds.

Largest Greenhouse in New England.

PRICES VERY LOW.

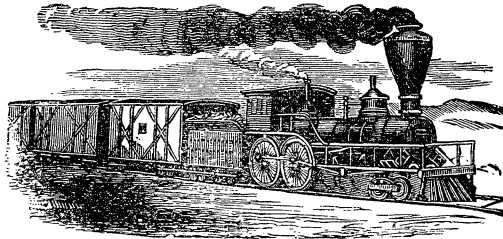
GOODS DELIVERED IN THE ANDOVERS.

THORNTON BROS.,
384 BROADWAY, LAWRENCE, MASS.

Telephone.

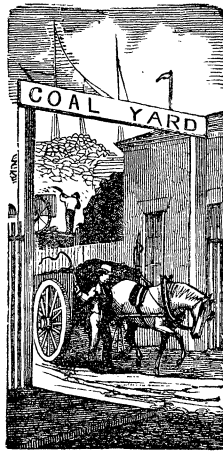
Z

EDWARD H. HUMPHREY,
(Successor to HUMPHREY BROS.,)



—DEALER IN—

COAL and WOOD.



CITY OFFICE,
56 North Union Street.

OFFICE AND YARD,
9 South Union Street,
LAWRENCE.

COAL for DOMESTIC USE.

PHILADELPHIA & READING

Free Burning White Ash,
Best Franklin,
Shamokin.

LEHIGH & WILKESBARRE COAL CO.'S

Egg, Stove and Broken sizes always in stock.

—ALSO—

Best George's Creek Cumberland,
For Blacksmith and Steam Use.

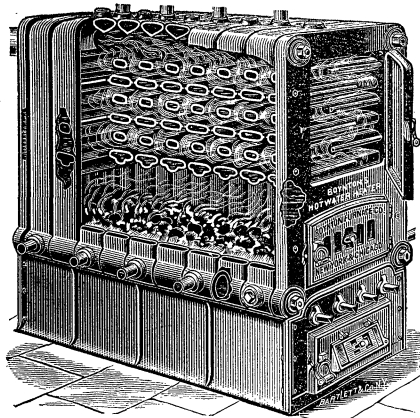
Dry Slab and Spruce Wood,
By the Cord, Load or Basket.

All Goods Delivered in North Andover at Lawrence Prices.

Electric cars pass the office. Telephone No. 229-6.

AA

WILLIAM FORBES & SON,
CONTRACTORS FOR



PLUMBING,
HOT-WATER
STEAM

HEATING,

—AND DEALER IN—

PLUMBERS' * SUPPLIES.

450 Essex Street, Lawrence.

↔ **SINGER** ↔

SEWING * MACHINE

OFFICE,

29 Franklin Street, Lawrence.

G. C. HUTCHINSON, - MANAGER.

* **SUPPLIES** *

OF ALL KINDS

AT WHOLESALE AND RETAIL.

BB

TAYLOR & CO.,
 Wholesale and Retail Dealers in
CHOICE FAMILY GROCERIES,
Meats and Provisions,
CANNED GOODS, COUNTRY PRODUCE,
Hay, Grain and Straw.

Below you will find a few of our many specialties:

<p style="text-align: center;">POTATOES</p> <p style="text-align: center;">—AND—</p> <p style="text-align: center;">SWEET POTATOES.</p> <p>You will always find in our stock a good selection of both.</p>	}	<p style="text-align: center;">BUTTER.</p> <p>We are large receivers of Dairy and Creamery Butter, in all sizes from half-pound prints to fifty-pound tubs.</p>
--	---	--

<p style="text-align: center;">CHEESE.</p> <p>We always keep on hand an assortment of Cheese, including Pineapple, Edam, Young America, Neufchatel, Cream, &c.</p>	}	<p style="text-align: center;">FLOUR.</p> <p>We are millers' agents for "PILLSBURY'S BEST XXXX," the quality of which is known not only in this country but across the water.</p>	}	<p style="text-align: center;">FRESH EGGS.</p> <p>We have a contract with several large heneries, which furnish us with STRICTLY FRESH EGGS all the year round.</p>
---	---	--	---	--

<p style="text-align: center;">LARD.</p> <p>We always keep the best—the pure leaf. We have it in three and five-pound pails and ten-pound tubs. We also keep cheaper grades.</p>	}	<p style="text-align: center;">MEATS.</p> <p>We have as nice a line of MEATS AND PROVISIONS as can be found in Essex county.</p>
---	---	---

<p style="text-align: center;">TEAS.</p> <p>We can suit you on Teas. We have all grades of Oolong and Japan Teas, also English Breakfast, Gunpowder, and Uncolored Japan.</p>	}	<p style="text-align: center;">COFFEES.</p> <p>We keep the best Coffee at all times. One trial makes a regular customer. Our trade in this line increases each year.</p>
--	---	---

Don't forget to call when in town.

57 to 61 Broadway, corner Common Street,
 Opposite B. & M. Railroad Station,
LAWRENCE.

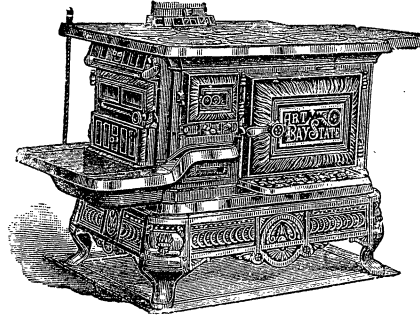
Handy to Electric Cars.

CC

JOHN WURZBACHER.

ERNEST RUPE.

WURZBACHER & CO.,
Stoves, Ranges, Furnaces,
LAMPS,



Kitchen Furnishing
Goods, &c.,
PLUMBING,
Gas and Water Piping,
TIN, COPPER AND SHEET
IRON WORKERS.

*STOVE REPAIRS AND ALL KINDS OF
JOBING ATTENDED TO.*

Agents for **BAY STATE RANGES.**

17 & 21 Jackson & 162 Common Streets,
LAWRENCE, MASS.

JAMES DORMAN,
Mason, Contractor and Builder.

PLANS, SPECIFICATIONS AND ESTIMATES

FURNISHED FOR

Buildings of Brick or Stone,
OF ANY STYLE OF ARCHITECTURE.

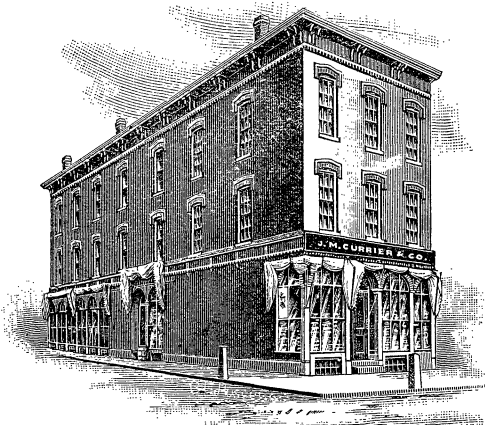
Hand & Steam Derricks and Engines
TO LET.

RESIDENCE, 116 CROSS STREET,
Lawrence, Mass.

DD

Established 1860.

THE OLDEST
—AND—
Largest Grocery House
IN LAWRENCE.



FIRST-CLASS GOODS
—AT—
FAIR PRICES.

J. M. CURRIER & CO.,
Wholesale AND Retail Grocers,
MEAT AND PROVISION DEALERS.
87 Essex, 17 and 19 Newbury Streets, Lawrence, Mass.

We deliver goods in North Andover every day.

Index to Lawrence Patrons.

Ball & Mullen, wall paper, shades, lamps, etc. 275 Essex.....	page U
Briggs & Allyn Mfg. Co. builders' supplies.....	page E
Buckley, McCormick & Sullivan, furniture, 222 Essex.....	page Q
Clark Charles & Son, druggists, 179 Essex.....	card inset
Colburn G. W. & Co. art novelties, frames, gilders and makers, 281 Essex.....	page H
Currier J. M. & Co. grocers and provision dealers, 87 Essex.....	top this page
Dick Hugo E. job printer, 118 Essex.....	page P
Dodson G. W. stoves, ranges, etc. 11 Lawrence.....	page X
Dorman James, contractor.....	page DD
Emerson Frank, druggist, 122 So. Broadway, So. Lawrence.....	page G
Enterprise Portrait Co. portraits, frames, etc., 116 Broadway.....	page K
Fellows S. W. jeweler, pianos, wall paper, etc. 265 Essex.....	page
Forbes William & Son, plumbers, kitchen furnishings, etc. 450 Essex	page BB
French, Puffer & Co. silver and plated ware, lamps, etc. 389 Essex.....	page W
Gould, Bay State Dye Works, office 164 Essex.....	page P

EE

INDEX TO LAWRENCE PATRONS—*continued.*

Halley T. D. florist, 338 and 340 Broadway.....	page N
Hamel & Cloutier, clothing and men's furnishings, 405 Essex....	page D
Humphrey Edward H. coal and wood, 56 North Union.....	page AA
Hutchinson G. C. sewing machines, 29 Franklin.....	page BB
Keyes M. A. millinery, 103 and 105 Essex.....	page R
Kennelly & Sylvester, pianos, organs, etc. 248 and 250 Essex....	page L
King Henry C. general mdse. 106 So. Broadway, So. Lawrence....	page I, K
Lawrence C. A. & Son, photographer, 181 Essex.....	page Y
Lord & Co. pianos, organs, musical mdse. 360 Essex...second card inset.	
Moore L. C. & Co. general merchandise, 302 Essex.....	page P
Nidetch Max, custom tailor, 114 Essex.....	page R
Oswald William & Co. dry and fancy goods, etc. 225-235 Essex....	page O
Regan William P. architect, office Essex Bank bldg. Essex.....	page Y
Ryder A. F. druggist, cor. Essex and Broadway.....	page X
Slater John, plumber and coppersmith, Essex cor. Hampshire....	page R
Stearns A. W. dry and fancy goods, ladies' garments, etc. Essex....	page V
Stiegler E. C. & Co. furniture, upholstering, etc. 124 Essex.....	page S
Sullivan & Willard, crockery, glass, tinware, etc. 531 Essex....	page X
Taylor & Co. wholesale and retail grocers, 57 to 61 Broadway....	page CC
Telegram Printing House, 25 and 27 Appleton.....	page T
The Bouquet, millinery, 210 Essex.....	page N
Thórnton Brothers, florists, 384 Broadway.....	page Z
Tompkins N. S. S. paints, oils, dye stuffs, etc. 191 Essex.....	page H
Treat Hardware and Supply Co. 582 and 584 Essex.....	page F
Trees Steam Machine Carpet Beating Works, 473 Essex.....	page M
Trees H. J. dye house, office 473 Essex.....	page M
Valley Archille, photographer, 390 Essex.....	page W
Warren F. A. men's clothing and furnishings, 187 Essex.....	page T
Wheeler & Wilson Sewing Machine Co. 375 Essex.....	page Y
Whitney H. M. & Co. druggists, 297 Essex.....first card inset	
Wurzbacher & Co. stoves, ranges, etc. 17 and 21 Jackson and 162 Common.....	page DD

FRANK M. GREENWOOD,

—DEALER IN—

PURE COCHECIWICK LAKE ICE

Families and Stores Supplied.

Residence, Pond Street, North Andover.

THE
NORTH ANDOVER
DIRECTORY,

CONTAINING

A General Directory of the Citizens,
Business and Streets,

AND OTHER USEFUL INFORMATION.

A. B. SPARROW, COMPILER.

The publishers desire to express their thanks to the people of North Andover for the courtesy and aid extended to them in their labor of canvassing for the Directory, and also for the liberal patronage received for their first edition. While efforts have been made to have the Directory correct, patrons will please bear in mind the difficulty of compiling an edition of so large a list of names without an occasional orthographical error; and we trust that all who give the work any attention will look for its merits rather than its defects.

SPARROW & FARNSWORTH,
PUBLISHERS,
SHIRLEY VILLAGE, MASS.

MRS. ELLEN MAHONEY,

—DEALER IN—

**Dry *and* Fancy Goods,
CROCERIES,**

**BREAD, CAKE AND PASTRY,
Confectionery, &c.**

35 East Water Street, North Andover.

J. G. BROWN,

—DEALER IN—

**DRY AND FANCY GOODS,
Hosiery, Underwear, &c.**

—ALSO—

A full line of Men's, Women's and Children's
BOOTS, SHOES AND RUBBERS.

Agents for RHODES & MOULTON STEAM LAUNDRY.

Water Street, North Andover.

FRANK M. GREENWOOD,

—DEALER IN—

PURE COCHECIWICK LAKE ICE

Families and Stores Supplied.

Residence, Pond Street, North Andover.

CONTENTS.

Abbreviations,	119
Business Directory,	156
Churches,	107
County Officers,	19
Fire Department,	117
Index to Advertisers,	166
Index to Lawrence Patrons,	EE
Lodges and Societies,	109
Population of Massachusetts, 1890,	167
Post Offices,	115
Postal Rates,	21
Resident Directory,	119
Schools and Teachers,	113
Street Directory,	105
Town Officers,	111



T. A. HOLT & CO.,

—DEALERS IN—

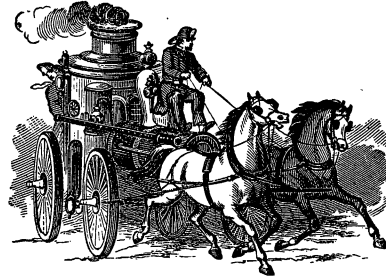
DRY GOODS, GROCERIES, HAY, STRAW,

Agricultural Implements, Best Grades of Flour,

And everything usually found in a first-class general store.

Phillips Square,

North Andover.



EDMUND S. COLBY.

Insurance. - -

*Lowest Rates, Strongest Companies,
and Prompt Settlements.*

Real Estate - -

Bought and Sold.

LOANS and MORTGAGES NEGOTIATED.

P. O. Address, North Andover Depot.

*Office and Residence, Middlesex Street, corner of
Dudley.*

MISS JULIA C. FLEMING,

Ladies' - Fine - Dressmaking.

LININGS AND TRIMMINGS FURNISHED IF DESIRED.

All orders receive my personal attention.

MAIN STREET, CORNER OF SUTTON,
North Andover.

JOHN L. DOWNING,

✦ Teacher of ✦

Violin, Cornet and Mandolin.

PIANOS TUNED AND REPAIRED.

Residence, High Street, North Andover Depot.

STREETS, AVENUES, ETC.

- Andover, from Unitarian church, Center District, to Andover, via estate of Abiel Wilson.
- Andover Road, from Boston road, Farnham District, to Andover.
- Ashland, from Sutton at railroad station to River View.
- Barker, from Sutton to Stevens.
- Belmont, off Hodges.
- Berry, from Salem Turnpike to Salem Turnpike, via Ingalls crossing.
- Beverly, from Suffolk to Middlesex.
- Boston Road, from Turnpike, Farnham District, to town line.
- Brown's Court, off Water near Engine House.
- Chestnut, from Andover, Center District, to Turnpike.
- Church, from Main to Water.
- Clarendon, from Pleasant to junction of Water and East Water.
- Court, from Prospect near cemetery to junction of Pleasant and Osgood.
- Cross, from Elm to Church.
- Davis, from Main near residence of Patrick Ryan to Pleasant.
- Dudley, from Maple avenue to Middlesex.
- East Water (New Jerusalem), from junction of Clarendon and Water, eastward.
- Elm, from Main opp. Greene to junction High and Prescott.
- Essex, from the common, Center District, via Boxford road.
- Ferry, from River View to the river.
- First, from Main to Maple avenue junction Railroad street.
- Foster, from Salem, Kimball District, to Pond school house.
- Greene, from Shawsheen river to Elm.
- High, from Sutton to Water.
- Hodges, from Sargent to May.
- Johnson, from the common, Center District, to Turnpike, Farnham District school house.
- Lawrence, from Shawsheen river, across Railroad street, to North Andover Center.
- Lowell Road, from Center District to town line.
- Main, from Osgood near town hall, via M. E. church, across B. & M. R. R.

Maple Avenue, from Railroad street, across Second, to Third.
 Marblehead, from Sutton to Middlesex.
 May, off Hodges.
 Merrimac, from Water to Main, opposite Third.
 Middlesex, from Lawrence, across Railroad street, to Greene.
 Milk, from Johnson to Chestnut.
 Osgood, from Andover, across Pleasant, to Great pond.
 Pelham, off Middlesex near Lawrence.
 Perry, off Lawrence near the river to Pelham.
 Phillips Court, off Osgood near Pleasant.
 Pond, from Osgood, Pond District, eastward, by Great pond.
 Poor's Lane, off Greene.
 Prescott, from High near railroad to Stevens.
 Prospect, from school house, Center District, to Osgood.
 Railroad, from Main near Morton, across Middlesex, to Andover line.
 River View, off Sutton opposite Main.
 Salem, from the common, Center District, via Foster.
 Sargent, off Railroad near Main.
 Sargent Court, from Main to Hodges.
 School, off Main near Second.
 Second, from Main near Keniston block, across Maple avenue, to Railroad avenue.
 Stevens, from Unitarian church, Center District, across Pleasant, via residence of M. T. Stevens.
 Stonington, from Maple avenue to Middlesex.
 Suffolk, from Marblehead to Beverly near the railroad.
 Sutton, from Shawsheen bridge to junction of Barker and High.
 Third, from Main near Merrimac to Middlesex.
 Union, off Railroad opposite Second to Shawsheen river.
 Water, from Main near M. E. church to junction of Clarendon and East Water.
 White Row, off Osgood, Stevens mill.

GEORGE REXTROW, **Painter & Paper-Hanger.**

ALL KINDS OF

KALSOMINING, GRAINING, WHITENING,
Glazing, Etc.

All orders by mail receive prompt attention.

Residence, Church Street, North Andover.

CHURCHES.

FIRST METHODIST EPISCOPAL CHURCH.

Corner Main and Water streets.

PASTOR.—Rev. Henry Matthews.

TRUSTEES.—James Standring, Henry Keniston, Charles Morton, J. E. Brown, E. S. Edmunds, J. M. Towne, D. H. Meserve, J. W. Haigh.

TREASURER.—E. S. Edmunds.

BOARD OF STEWARDS.—J. M. Towne, John Pollard, Mrs. Alice Pollard, D. H. Meserve, Mrs. E. S. Edmunds, J. G. Brown, C. W. Dillon, A. M. Markey, F. W. Abbott, A. W. Brainard.

SUNDAY SCHOOL.—Superintendent, Alba M. Markey; assistant superintendent, E. S. Edmunds; secretary, Henry Webster; treasurer, C. W. Dillon.

HOURS OF SERVICE.—Sunday, preaching at 10.30 a. m. and 6.30 p. m.; Sunday school, 12 m.; Junior Epworth League, 3 p. m.; Epworth League, 5.45 p. m. Thursday evening, prayer meeting at 7.30.

LADIES' SOCIAL CIRCLE.—President, Mrs. J. Pollard.

EPWORTH LEAGUE.—President, Miss Rachel Matthews.

JUNIOR EPWORTH LEAGUE.—Superintendent, Miss Rachel Matthews.

ST. PAUL'S EPISCOPAL CHURCH.

Main street.

Founded in 1880. The present church building was built and consecrated May 17, 1882. First rector, Rev. Augustine H. Amory, followed by Rev. Robert B. Parks and Rev. George Walker.

OFFICERS.—Vestrymen, William J. Dale, J. D. W. French, Joseph Tempest, Solomon Watson, John Wriggerley, Alex. Toothaker, A. Kershaw; clerk of vestry, Jonas Eastwood; treasurer, C. H. Robinson.

SEXTON.—Joseph Midwood.

ORGANIST.—Richard Redman.

Pulpit supplied at present.

SERVICES.—Sunday, 10.30 a. m. and 7 p. m.; Sunday school after morning service; Holy Communion first Sunday in the month. Ladies' Friendly Society meets Thursday evening at Parish rooms. Ladies' Sewing Society meets Tuesday afternoon at Parish rooms.

NORTH PARISH CHURCH (UNITARIAN).

North Andover Center.

PASTOR.—Rev. Charles Noyes.

PARISH COMMITTEE.—Nathaniel Stevens, Charles F. Johnson, Edward Adams, Mrs. H. N. Stevens, Mrs. Ralph Blake.

TREASURER.—M. T. Stevens.

CLERK.—S. D. Stevens.

SUNDAY SCHOOL.—Superintendent, Rev. Charles Noyes.

SERVICES.—Sunday, preaching at 10.30 a. m.; Sunday school, 12 m.

TRINITARIAN CONGREGATIONAL CHURCH.

Elm street.

DEACONS.—J. H. Stone, George E. Hathorn, J. S. Sanborn, C. E. Stillings.

CLERK.—N. P. Frye.

TREASURER.—J. H. Stone.

SUNDAY SCHOOL.—Superintendent, D. W. Carney.

SERVICES.—Sunday, preaching at 10.30; Sunday school, 12 to 1.

EDWARD ADAMS,

Contractor for Road and Bridge Building,

TEAMING, JOBBING, &C.

ICE Supplied in any quantities to stores and families.
Office, Mill Street, North Andover.

BLACKSMITH WORK of all kinds.

HORSE SHOEING and Carriage Work.

SHOP, NORTH ANDOVER CENTER.

LODGES AND SOCIETIES.

A. F. & A. M.

COCHICHEWICK LODGE.



Organized June 24, 1874. Chartered June 24, 1875. Regular communications the Friday on or before the full moon of each month in Masonic hall, Phillips square. W. M., Frank Tisdale; S. W., George H. Perkins; J. W., George A. Rea; Treas., Frank E. Weil; Sec., Charles F. Johnson; Chap., Joseph S. Sanborn; Mar., George L. Burnham; S. D., Frank A. Warren; J. D., Samuel D. Berry; S. S., Nathan Foster; J. S., Artemas V. Chalk; I. S., William E. Ayers; Organist, Frank D. Foster; Tyler, Frederick P. Hannaford; Relief Committee, Oliver R. Gile, George I. Smith, S. William Ingalls. Secretary's address, P. O. Box 34.

I. O. O. F.

WAUWINET LODGE, No. 111.



Meets Wednesday evenings at 7.45 o'clock in Odd Fellows' hall, Main street. N. G., John B. Lewis; V. G., C. W. Reynolds; Sec., T. P. Wentworth; Treas., George Rextrow; Warden, A. L. Fernandes; Con., John Somerville, Jr.; O. G., J. L. Leighton; I. G., Charles Clark; R. S. N. G., William Halliday, Jr.; L. S. N. G., H. B. Foster; R. S. V. G., F. E. Weil; L. S. V. G., L. C. Wentworth; R. S. S., B. A. Cole; L. S. S., W. G. Stone; Chap., R. W. Walker.

U. O. P. F.

BRADSTREET COLONY, No. 126.

Meets the first and third Tuesday evenings of each month at 8 p. m., in Odd Fellows' hall, Main street, North Andover. The officers are as follows: Gov., A. W. Brainerd; Lieut. Gov., Miss Julia M. Robinson; Sec., E. L. Perley; Collector, A. B. Bixby;

Treas., G. W. Morgan; Chap., Miss Emma F. Trulan; Sergt.-at-Arms, A. V. Chalk; Dept. Sergt.-at-Arms, Miss Mary H. Stone; S. I. G., J. M. Craig; S. O. G., M. Phelan.

I. O. G. T.

WYNONA LODGE, No. 295.



Meets Monday evening in Odd Fellows' hall. C. T., Eugene D. Tufts; V. T., Annie Sutcliffe; Treas., Frank W. Frisbee; Chaplain, Rev. H. Matthews; Sec., Charles W. Hixman; F. S., W. A. Frost; P. C. T., A. V. Chalk; M., Fred A. Carr; G., W. G. Ayers; S., William Drew; Supt. Juvenile Temple, Annie Sutcliffe.

JOHN F. SANBORN, DOMESTIC ✱ BAKER.

Hot Bread and Rolls Fresh Every Morning.

CAKE, PASTRY, ETC., FRESH EVERY DAY.

Hot Brown Bread Every Saturday Evening.

Send in your orders to the HOME BAKERY,

Stonington Street, North Andover.

EDGAR R. TUCKER,

—PROPRIETOR—

ROSE MEADOW FARM.

—DEALER IN—

PURE MILK.

Families supplied daily. Send in your orders.

RESIDENCE, ESSEX STREET, NORTH ANDOVER.

TOWN OFFICERS.

SELECTMEN.—Edward W. Greene, Harry W. Clark, Patrick P. Daw.

TOWN CLERK.—James W. Leitch.

TOWN TREASURER.—George H. Perkins.

AUDITOR.—Edwin L. Perley.

COLLECTOR OF TAXES.—Edmund S. Colby.

CLERK OF SELECTMEN.—Harry W. Clark.

ASSESSORS.—The Selectmen.

OVERSEERS OF THE POOR.—The Selectmen.

SUPERINTENDENT OF THE ALMSHOUSE.—Albert Burnham.

CONSTABLES.—Artemas V. Chalk, George I. Smith, George L. Harris, Fred L. Sargent, William J. Toohey.

CHIEF OF POLICE.—Enos S. Robinson.

SURVEYOR AND MEASURER OF LUMBER.—L. S. Perley.

ROAD COMMISSIONERS.—Bradford C. Smith, A. P. Cheeney, James C. Poor.

BOARD OF REGISTRATION.—Calvin Rea, J. W. Leitch, Michael E. Bolton, Alfred L. Fernandes.

TOWN PHYSICIAN.—Dr. F. E. Weil.

BOARD OF HEALTH.—C. P. Morrill, Chairman.

For County Officers, see Andover Directory.

PUBLIC LIBRARY AND READING ROOM.

Odd Fellows' building, Main street. The library contains about 7,100 volumes and is open for the delivery of books Wednesday and Saturday afternoon from 3 to 5 o'clock. The reading room is open every evening from 7 to 9, except legal holidays. Trustees, Dr. Frank E. Weil, J. A. Ellison, Alfred L. Smith.

C. L. FARNSWORTH,
CONCRETE PAVER
—AND—
Gravel Roofer.

Walks, Driveways,
ETC,
CONCRETED BY SKILLED WORKMEN.

ALL WORK GUARANTEED.

Correspondence Solicited.

**ADDRESS, - - P. O. BOX 478,
AYER, MASS.**

PUBLIC SCHOOLS.

SCHOOL COMMITTEE.—Dr. Charles P. Morrill, Chairman;
Miss Mary G. Carleton, Secretary; Dr. Frank E. Weil.

TEACHERS.

HIGH SCHOOL, CENTER DISTRICT.—James C. Flagg, Principal; Miss Annie L. Sargent, Assistant.

MERRIMACK, No. 1.—A. L. Smith, Principal; Miss Laura M. Dunsmoor, Assistant.

MERRIMACK, No. 2.—Miss Hannah C. Carleton.

MERRIMACK, No. 3.—Miss Mary E. Quealey.

MERRIMACK, No. 4.—Miss Helen C. Sargent.

MERRIMACK, No. 5.—Miss Laura A. Bailey.

MERRIMACK, No. 6.—Miss Annie E. Sanborn.

MERRIMACK, No. 7.—Miss Annie M. Osgood.

MERRIMACK, No. 8.—Miss Jean U. Piddington.

UNION No. 1.—Miss Estelle S. Rodgers.

UNION No. 2.—Miss Helen E. Roach.

BRADSTREET No. 1.—Miss Anna M. Tucker.

BRADSTREET No. 2.—Miss Henrietta Hatch.

CENTER, No. 1.—Miss Ella A. Small.

CENTER, No. 2.—Miss Mary B. Sproul.

FARNHAM DISTRICT.—Miss Maud Randall.

KIMBALL DISTRICT.—Miss B. Letitia Wilcox.

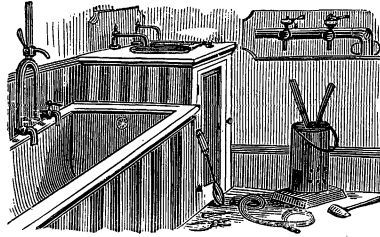
POND DISTRICT.—Miss Margaret P. Hubbard.

RIVER DISTRICT.—Miss Hattie M. Ellis.

MUSIC.—Edward Butterworth.

DRAWING.—Miss Harriet D. Condon.

JAMES W. LEITCH,
 —DEALER IN—
STOVES, * RANGES,
OIL STOVES
 —AND—
KITCHEN GOODS,
 Copper and Granite Ware,
 Etc. Agent for
MAGEE RANGES.



*Also, all kinds of Contract Work, Plumbing,
 Repairing, etc.,*

DONE BY SKILLED WORKMEN.

*Store, Water Street, under Merrimack Hall,
 North Andover.*

P. O. Address, North Andover Depot.

JOHN WILCOX,



Manufacturer of
 ALL KINDS OF
Heavy Wagons
 —AND—
CARTS.

HORSE SHOEING

OUR SPECIALTY.

*Special attention given
 Difficult Shoeing.*

BLACKSMITH WORK

OF ALL KINDS.

Andover Street, North Andover.



POSTOFFICES.

NORTH ANDOVER POST-OFFICE.

Isaac F. Osgood, Postmaster; Mrs. L. M. Osgood, Assistant Postmaster; Clerk, A. S. Ingalls.

Mails arrive from South and West at 9 a. m., 2 and 5.10 p. m.; from Newburyport, 10.30 a. m. Mails close for South and West at 9 and 10.30 a. m., 5 p. m.; for Newburyport, 2 p. m.

NORTH ANDOVER STATION.

Charles A. Pilling, Postmaster.

Mails arrive from Boston, 7.15 and 8.37 a. m., 1.05 and 4.49 p. m.; from North Andover, 9.30 and 11 a. m., 5.30 p. m.; from Portland, 12.05 and 6.56 p. m.; from Lawrence, 1.30 p. m. Mails close for the East, 8.37 a. m., 4.49 p. m.; for Boston, 10.20 a. m., 12.04 and 6.56 p. m.; Lawrence and North, 11 a. m.; North Andover, 8.50 a. m., 1.30 and 5 p. m.; for Salem, 1.07 p. m.

For Postage Rates, see page 21.

EDWARD COOPER,

—DEALER IN—



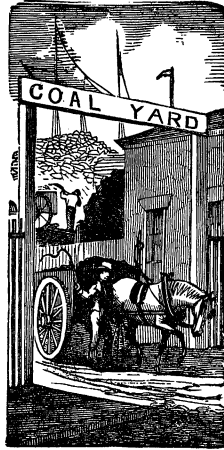
Choice Family
GROCERIES,
Home-Made Bread,
Select Brands Flour,

ALSO,

CORN, MEAL,
Cigars, Tobacco, Etc.

41 MAIN STREET,

NORTH ANDOVER.



J. JACOBS,
—DEALER IN—
COAL and LUMBER.

Constantly in stock, all the best qualities of
Anthracite & Cumberland Coal.

—ALSO,—
Spruce and Pine Lumber,
Shingles, Lath, Clapboards,
Etc.

OFFICE AND YARD,
MAIN STREET, near SUTTON.

MRS. ELLEN T. MORRISSEY,



—PROPRIETOR—
MAIN STREET
Dining Rooms.

Board by the day or week,
with or without rooms,
at reasonable rates.

Confectionery, Cigars,
Etc.

Bread, Cake and Pastry fresh every day.
MAIN STREET, OPP. FIRST, NORTH ANDOVER.

J. W. RICHARDSON,

—DEALER IN—
FINE GROCERIES,
Selected Teas, Coffees and Spices,
BUTTER AND CHEESE

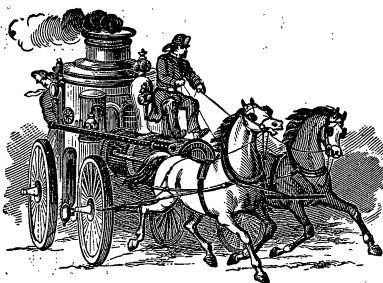
From the best Vermont and New York Dairies.
Choice Syrup and Molasses. Canned Fruit in Variety.

CHOICE BRANDS OF FLOUR,

And a complete assortment of goods usually kept in a first-class grocery store.

Main Street, North Andover.

FIRE DEPARTMENT.



BOARD OF ENGINEERS.—William A. Johnson, Charles H. Shedd, Clerk; George Stone.

EBEN SUTTON STEAMER, No. 1.

Capt., John Burnham; 1st Lieut., Frank A. Coan; Clerk, A. W. Badger; Treas., Martin H. Pulsifer; Engineer, Enos S. Robinson; Asst. Engineer, Horace E. Towne; S. Hoseman, George Rextrow; 1st Pipeman, William R. Johnson; 2d Pipeman, Willard H. Handy; 3d Pipeman, Charles A. Dame; 4th Pipeman, Eli H. Watts; Driver of Steamer, Wellington Davis; Driver of Hose Wagon, George H. Mizen; Hosemen, Daniel W. Sutcliffe, Walter G. Stone, Charles B. Smith.

COCHICHEWICK ENGINE COMPANY, No. 2.

Center District. Chief Engineer, William A. Johnson; Assistant, George Stone; Clerk, Charles Shedd; Capt., G. F. Royal; 1st Assistant, Timothy Eagan; 2d Assistant, George H. Wilton; Clerk, John Herbert; 41 call men.

J. E. REYNOLDS & SON,
CIDER MAKERS

—AND DEALERS IN—

CIDER AND VINEGAR.

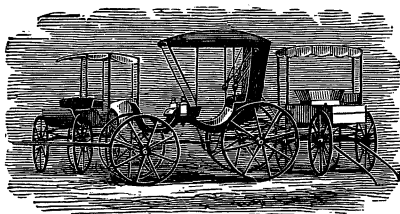
JOHNSON STREET, FARNHAM DISTRICT,
North Andover.

McDONALD & HANNAFORD,

(Established 1820.)

—MANUFACTURER OF—

COUPE, BUGGY AND DOUBLE HARNESS,



—ALSO,—
**CARRIAGE
 PAINTING
 —AND—
 TRIMMING.**

All Work Warranted.

ORDERS BY MAIL RECEIVE PROMPT ATTENTION.

NORTH ANDOVER, MASS.

A. McDONALD.

F. P. HANNAFORD.



JOHN H. FULLER,

—DEALER IN—

Dry Goods, Groceries, Boots, Shoes and Rubbers,

CHOICE BRANDS OF FLOUR, GRAIN, FEED,

Fertilizers, Garden Produce, AGRICULTURAL IMPLEMENTS, &c.

Elm Street, near Water, North Andover.