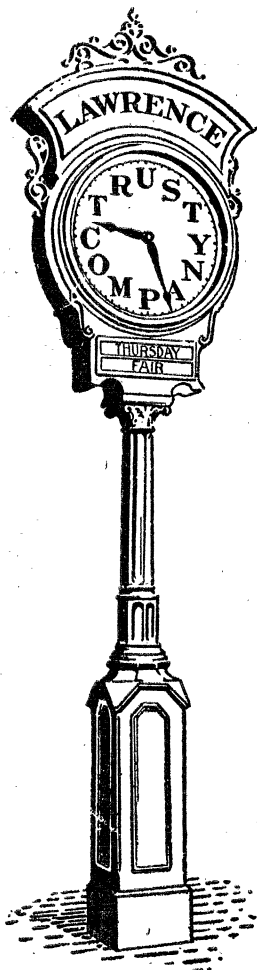


Lawrence Trust Co.

**Cor. Essex and Hampshire Sts.,
LAWRENCE, MASS.**



Interest Paid on Accounts Subject to
Check

Special Rates on Time Deposits

Travelers' Checks on All Parts of
World

Safe Deposit Boxes to Rent

Savings Department

5%

**INTEREST HAS BEEN PAID IN
OUR SAVINGS DEPARTMENT**

Interest Commences the
First Day of Every Month

LAWRENCE TRUST CO

LARGEST TRUST COMPANY IN ESSEX COUNTY



**MEMORIAL HALL
LIBRARY**

Andover, Massachusetts
475-6960

2

Andover Trust Company
ANDOVER, MASSACHUSETTS

BROADWAY OFFICE

238 Essex Street

590 Essex Street

MEMBER FEDERAL SYSTEM

Customers May Use Either Office at their Convenience

BANKING DEPARTMENT: Accounts of Individuals, Firms and Corporations received subject to check. Balances of \$500 and over receive interest monthly.

SAVINGS DEPARTMENT: Savings accounts receive interest payable semi-annually. Deposits draw interest from the first of each month.

TRUST DEPARTMENT: This company may be designated as Executor, Administrator or Trustee. Responsible service with moderate charges.

SAFE DEPOSIT BOXES FOR RENT AT EITHER OFFICE.

DIRECTORS

Frank M. Andrew
Clinton O. Andrews
James H. Bride
Albert H. Chamberlain
Dennis J. Costello
Jerome W. Cross
Maurice J. Curran
William D. Currier
Arthur B. Emmons
Herbert W. Field
James C. Forbes
Lewis A. Foye

William H. Gile
George W. Hamblet
Wm. D. Hartshorne
Herbert W. Horne
John E. Horne
George E. Kunhardt
Langdon E. Locke
Ashton Lee
Fred C. McDuffie
George E. Murray
Walter E. Parker

Wilbur E. Rowell
George F. Russell
William F. Rutter
Fred H. Sargent
George H. Simonds
Andrew B. Sutherland
John P. Sweeney
Byron Truell
Charles W. Walworth
Parry C. Wiggin
George L. Wright

OFFICERS

G. FRED RUSSELL, President

FRED C. McDUFFIE, Vice-President	HENRY L. SHERMAN, Treasurer
LANGDON E. LOCKE, Vice-President	ARTHUR C. DAME, Secretary
BYRON TRUELL, Vice-President	ARTHUR J. CROSBY, Asst. Treas.
WESTON F. EASTMAN, Asst. Treas.	

**Banking Hours: 9 A. M. to 3 P. M. Saturdays, 9 A. M. to 12 M.
Open Saturday evenings from 7 to 8.**

RESOURCES \$7,760,000.00

Lawrence Savings Bank

255 ESSEX STREET
CORNER CITY HALL SQUARE

LAWRENCE, - - MASS.

INCORPORATED MARCH 10, 1868 COMMENCED BUSINESS MAY 14, 1868

President, ALVIN E MACK

Treasurer, LEWIS A. FOYE

VICE-PRESIDENTS

JOSEPH S. HOWE

JAMES I. MILLIKEN

WILLIAM T. McALPINE

TRUSTEES

Mahlon D. Currier

James A. Macdonald

Kendall S. Norwood

Lewis A. Foye

Alvin E. Mack

John A. Perkins

Newton P. Frye

Arthur D. Marble

William E. Philbrick

Joseph S. Howe

William T. McAlpine

Roland A. Prescott

Charles H. Kitchin

James I. Milliken

Deposits will be received daily and put upon interest on first day of every month.

Dividends payable on and after January first and July first.

Accounts of \$1.00 to \$2,000 can be opened in the name of one person alone, and also in the name of one person in trust for another. Both can accumulate to \$4,000. Joint Accounts—payable to either or to the survivor—\$1.00 to \$2,000, can be opened and accumulate to \$4,000.

Deposits and withdrawals may be made by mail.

This Bank is examined and audited by the Bank Commissioner's Department of Massachusetts.

Safety with Service.

BANKING HOURS

Open Daily from 9 A. M. to 1 P. M., also Saturdays 9 to 4 and Saturday Evenings from 7 to 8.

JUSTICE OF THE PEACE

NOTARY PUBLIC

F. M. & T. E. Andrew

Real Estate and Insurance

**Fire, Automobile, Plate Glass, Steam Boiler,
Workmen's Compensation and
Liability Insurance**

MORTGAGES NEGOTIATED

**303-304 Bay State Building
LAWRENCE, MASS.**

Telephone 199

Essex Savings Bank

CORNER ESSEX AND LAWRENCE STREETS,
LAWRENCE, MASS.

Incorporated 1847

Open daily from 9 to 1 and Saturdays from 9 to 4 and 7 to 8.

5% Dividends Paid

For the past 2½ years.

Deposits commence to draw interest on the third Wednesday of January, April, July and October. Dividends are declared on the third Wednesday of April and October and are immediately added to the principal.

DEPOSITS	\$16,500,000
SURPLUS	1,400,000

President, WALTER E. PARKER

VICE-PRESIDENTS

CHARLES U. BELL

GEORGE E. KUNHARDT

FRANKLIN B. DAVIS

Treasurer, ALBERT I. COUCH

Paying Teller, HERBERT W. FIELD

Receiving Teller, HERBERT P. WILKINSON

TRUSTEES

Charles U. Bell
Henry K. Webster
Walter E. Parker
Franklin Butler

Robert J. Macartney
George E. Kunhardt
Byron Truell
Fred H. Eaton
Albert I. Couch

Justin E. Varney
Franklin B. Davis
Richard Ward
Thomas M. Cogswell

Residence Phone 2647-W

Telephone 1690

WALTER G. HALL, Inc.

Mill Supplies : Auto Accessories

Paints : Oils : Hardware

WALTER G. HALL,
President and Treasurer

381 Essex Street
LAWRENCE, MASS.

COAL

AND

BUILDING SUPPLIES

LIME

CEMENT

Sand Struck Brick

Sewer Pipe and Flues

Neat Cement

Bishopric Stucco Board

Fire Brick

Fire Clay

Plaster of Paris

Plastering Hair

Ruberoid Roofing — Slatex Shingles

SAND - GRAVEL - CRUSHED STONE

M. O'MAHONEY CO.

Yard Office
8 WEST ST.
Phone 2978

Main Office
481 ESSEX ST.
Phone 2977

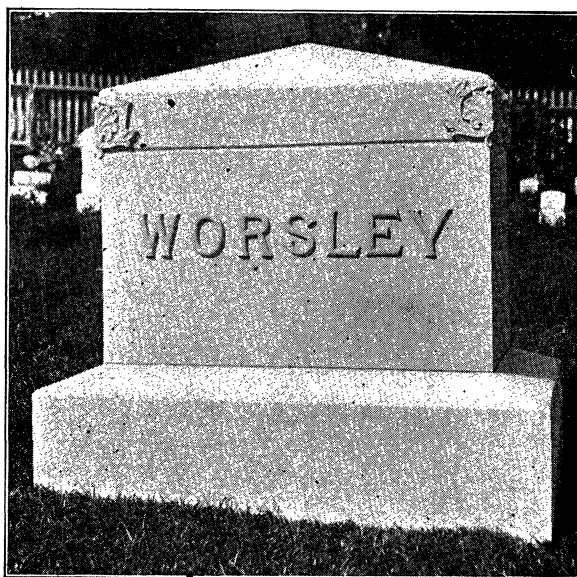
Branch Office
221 NEWBURY ST.
Phone 3060

BELLEVUE Monumental Works

Established 1888

WILLIAM E. REDFERN, Proprietor

MARBLE and
GRANITE **MONUMENTS**



TABLETS, HEADSTONES and MARKERS
IN ALL THE LATEST DESIGNS

We Carry the Largest Stock of Finished Work to Select From
in the City

EQUIPPED WITH THE LATEST IMPROVED MACHINERY

WE EMPLOY NO AGENTS

MAUSOLEUMS

64-66 Manchester St., LAWRENCE, MASS.

Telephone 2390

A black and white line drawing of a family in a flower shop. A man in a suit stands behind a counter, looking at a woman who is holding a small child. The woman is looking at a large bouquet of flowers. The child is standing next to the woman, looking at the flowers. The shop is filled with various types of flowers, including large chrysanthemums and smaller bouquets. The scene is set in a room with large windows and a counter.

The CHEERFULNESS of YOUR HOME

Surroundings is increased twofold by the little artistic touches.

The BRIGHT FLOWERS which Autumn gives us should have a place in every artistic home.

CHRYSANTHEMUMS are sunshine itself.

Take home a bunch TO-DAY or Phone us to deliver them.

**Campbell's
Flower Shop**

W. C. CAMPBELL, Prop.

Bay State Building, Lawrence, Mass.

© FLORIST ADV. CO. ST PAUL

The Name of BUCKLEY

HAS STOOD FOR RELIABILITY IN FURNITURE, FOR VALUE AND FOR STYLE OVER A PERIOD OF 35 YEARS IN YOUR COMMUNITY



T. J. BUCKLEY COMPLETE HOUSE FURNISHER

We believe that the fullest value for your money all the year round is better than "bargain sales."—Therefore, regardless of the time of the year you buy an article from us you are assured that you are purchasing it for the lowest possible market price.

Our large and varied stock assures you of the best selection of furniture to be had in Lawrence.

Fifth Floor Living Room Furnishings, Library Tables, Desks, Macey Sectional Cases, Morris Chairs and Rockers.

Fourth Floor Everything for a Chamber; Dressers, Chiffoniers, Dressing Tables, Beds in Oak, Mahogany, American Walnut, Birds-eye Maple, Ivory and Circassian Walnut. Brass, Iron and Wood Beds, Mattresses, Springs and Pillows.

Third Floor Floor Coverings, comprising both Domestic and Oriental Patterns in the best qualities of Velvet, Tapestry, Brussels, Wiltons, Axminsters and Sax-onies. A large and assorted line of Linoleum and Oil Cloths. Baby Carriages and Sulkies.

Second Floor Parlor Suites, carefully upholstered, well made and specially finished. Styles that are impossible to equal for durability and quality. We also show a large stock of Chairs and Rockers in Tapestry and Leather. Lace Draperies, Portieres and Window Shades.

Street Floor Entire Floor devoted to clean-cut, durable Dining Room Furniture, beautifully designed and low priced.

Base-ment Glenwood Ranges, Heaters and Gas Stoves; awarded two Gold Medals at the World's Fair, 1916. Complete lines of Gibson and Eddy Refrigerators.

Vocalion Phonographs & Records

SOLE AGENT FOR GLENWOOD RANGES

BUCKLEY

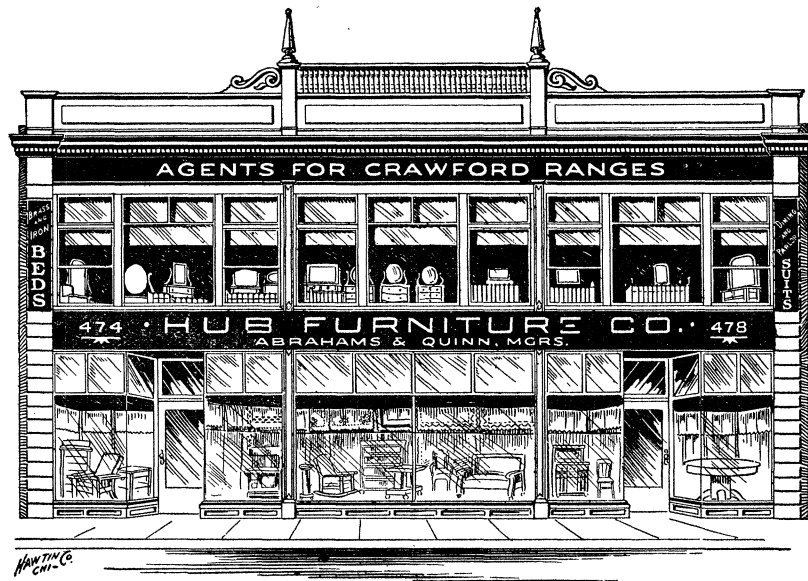
Complete House Furnisher

284 ESSEX ST.,

LAWRENCE

284 ESSEX ST.

The Store That Always Gives Satisfaction



Hub Furniture Co.
ABRAHAM & QUINN—MANAGERS

**474-478 ESSEX STREET
LAWRENCE, MASS.**

AGENTS FOR

Crawford and Columbia
Ranges Grafonolas

The
James H. Clifford
COMPANY

INTERIOR
Decorators
EXTERIOR

Wall Papers, Rugs and Draperies
Floor and Table Lamps

**Electric Washing and
Ironing Machines**

430 Essex Street., Lawrence, Mass.

MAKERS OF "HOMES BEAUTIFUL"

H. BRUCKMANN

DEALER IN

**HAY, GRAIN AND
== FEED ==**

Poultry Supplies and Straw

SERVICE

QUALITY

LOW PRICES

**Deliveries in Andover Every Day
Ballardvale Deliveries Twice a Week**

158 S. Broadway, LAWRENCE, MASS.

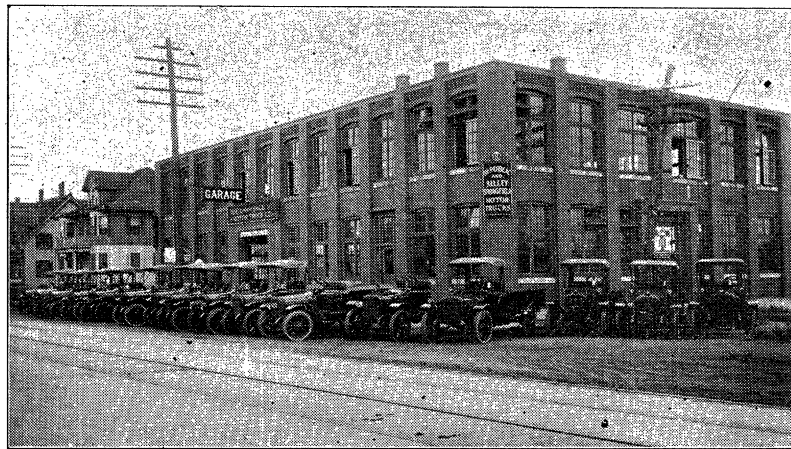
Telephones 2252, 2253

Storehouse, 26-30 Ellis Street

TEL. 242

J. W. McCARTHY, Prop.

LAWRENCE Motor Truck Company



REPUBLIC and FEDERAL MOTOR TRUCKS

SERVICE STATION FOR
UNITED STATES, AND NOBBY CORD TIRES
KELLY-SPRINGFIELD AND GOODRICH
SOLID TIRES

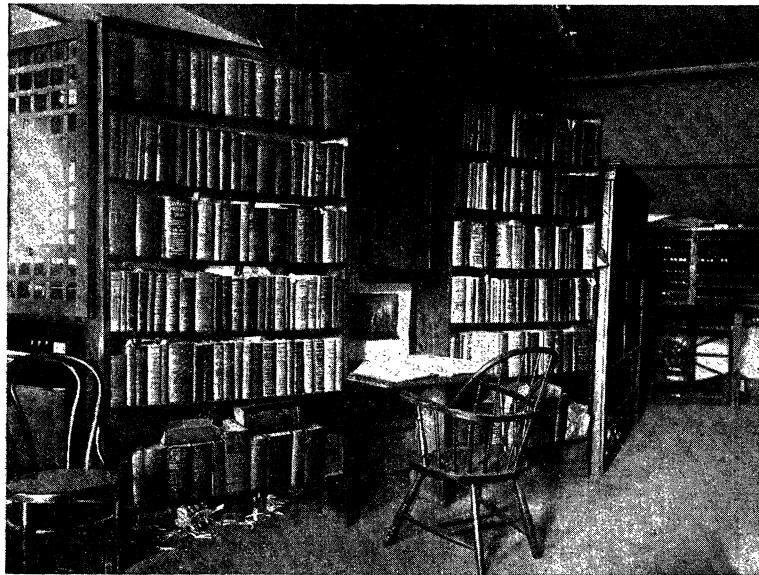
LARGEST ESTABLISHMENT NORTH OF
BOSTON DEVOTED ENTIRELY TO
MOTOR TRUCKS

314-316 So. Broadway, Lawrence, Mass.

SERVICE

WE are at your service when you wish to consult directories throughout the United States & Canada. Our **DIRECTORY LIBRARY** of over 300 volumes is kept up for your service.

You may wish to find a person or a business firm in some distant state. Call or telephone us and we will gladly give you the desired information free of charge.



Free Information Library

MAINTAINED BY

The Henry M. Meek Publishing Co.

12 Washington Sq., (West) - Salem, Mass.

Telephone 650



**MORTON
MOTOR EQUIPMENT
COMPANY**

Automobile Supplies



**KELLY-SPRINGFIELD AND
UNITED STATES TIRES**

VULCANIZING

Jackson & Oak Sts., Lawrence

TELEPHONE 1692

GREGORY & BROWN CO.



One of our Scenery Wall Decorations "THE ZONES"

Full Set Containing 31 Strips, Each 18 Inches Wide

Importers and Interior Decorators

PAPER HANGING and FABRICS

DRAPERIES, CARPETS, UPHOLSTERING, PAINTING
FURNITURE and DECORATING

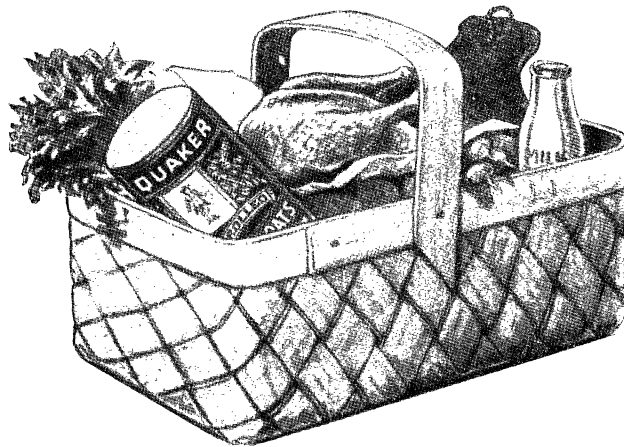
GREGORY & BROWN CO.

6 HAMILTON PLACE, BOSTON

Telephone 526 Fort Hill

LAWRENCE MARKET CO.

THE DEPARTMENT MARKET



Tea & Coffee

Groceries

Dairy

Fruit and Vegetables

Meats Fish

Delicatessen

Bakery

Candy and Crackers

534 - 536 Essex Street, Cor. Franklin
LAWRENCE, MASS.

Arlington Trust Company

Organized 1910

CORNER LAWRENCE AND ESSEX STREETS,
LAWRENCE, MASS.

CAPITAL \$200,000

We invite you to open an account with us and assure you of every courtesy and consideration.

We pay the highest rates of interest to our depositors consistent with sound banking.

President

JOHN A. BRACKETT

Vice President

WILLIAM H. RUSSELL

Treasurer

CORNELIUS A. MCCARTHY

DIRECTORS

John A. Brackett	Cornelius F. Lynch	Alfred Sagar
James A. Brogan	George A. Lyon	A. L. Siskind
David Brown	George A. Mellen	Robert T. Todd
Edward I. Koffman	William H. Merrill	Thomas F. Toomey
James F. Lanigan	Daniel J. Murphy	Simeon Viger
	William H. Russell	

**Bank Hours From 9 A. M. to 3 P. M. Saturdays 9 A. M. to 12 M.
Saturday Evenings 7 to 8.30**



Orange Phosphate

Sarsaparilla

Cream Soda

Root Beer

Lemon Soda

Nerve Food

CURRAN & JOYCE

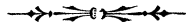
COMPANY

Lawrence, Mass.

Phone 632

Reid and Hughes Co.
THE HOUSE OF THE SQUARE DEAL

LEONARD E. BENNINK,
Treasurer and General Manager



WE CARRY A FULL LINE OF
READY-TO-WEAR GOODS, MEN'S AND WOMEN'S
UNDERWEAR AND HOSIERY, MEN'S FURNISHINGS,
BEDDING AND UPHOLSTERY, RUGS, MILLIN-
ERY, DRESS AND WASH GOODS, BOOKS
AND STATIONERY, DOMESTICS, GLOVES,
TOILETS.

**WE CARRY THE BEST LINE OF KITCHEN WARE IN THE
CITY OF LAWRENCE**

**VISIT OUR HOME MAKERS DEPARTMENT
ON THE THIRD FLOOR**

We Deliver Tuesdays and Fridays in Andover and No. Andover

THE BOSTON STORE

INCORPORATED FEB. 14, 1849

Lawrence Gas Company

OFFICE, 370 ESSEX STREET

Capital, \$2,500,000

President, N. H. EMMONS, Boston

Treasurer, R. W. EMMONS, 2d,
79 Milk Street, Boston

Clerk, H. R. PEVERLY, 79 Milk Street, Boston

DIRECTORS

WALTER COULSON, Lawrence

FRANKLIN BUTLER, Lawrence

FRED H. SARGENT, Lawrence

NATHANIEL H. EMMONS, Boston

R. W. EMMONS, 2d, Boston

FRANK BREWSTER, Boston

IRVIN McD. GARFIELD, Boston

FRED H. SARGENT, Agent, Lawrence, Mass.













TREAT

HARDWARE CORPORATION

ESSEX STREET, Cor. BROADWAY
LAWRENCE, MASS.

TOOLS & CUTLERY, — BUILDERS' HARDWARE, HOUSEHOLD & KITCHEN SPECIALTIES, — PHOTOGRAPHIC SUPPLIES, — SPORTING GOODS, — AUTO ACCESSORIES, — PAINTS, OILS AND VARNISHES, — AGRICULTURAL IMPLEMENTS, — MILL SUPPLIES, — CUT GLASS, — SILVERWARE, JEWELRY, NOVELTIES, ETC.—SEEDS AND GARDEN TOOLS—KIDDIE KARS, BICYCLES, VELOCIPEDES & COASTER CARTS.

Remember Treat's for Hardware

Tel. 2535 ELEVATOR SERVICE

ALL CARS STOP IN
FRONT OF THIS STORE



Frank E. Snow

Manufacturer and Dealer In

**Wagons, Commercial Auto
Bodies, Tops**

**Automobile and Carriage
Painting and Repairing**

◆◆◆
Spring Work a Specialty

**GENERAL BLACKSMITHING AND
HORSESHOEING**

Ford Service Station

VIKING AUTO TIRES AND TUBES

Guaranteed Fabric 6,000 Miles
Cord 8,500 Miles

◆◆◆
West and Bradford Sts., Lawrence, Mass.
Telephone Connection



STANDARD FIRST QUALITY TIRES AND TUBES

SHOES AND TUBES VULCANIZED

— **Star** —
Super Tire Service Station

Peabody Motor Car and Supply Co.

Broadway at Methuen St.

Complete Line of Auto Supplies

PHONE 172 FOR PRICES

Free Air Service 200 lbs. Pressure.

We Pump 7 Grades of Oil



Edward L. Bennett

UNDERTAKER



283 BROADWAY :: Telephone 993-W

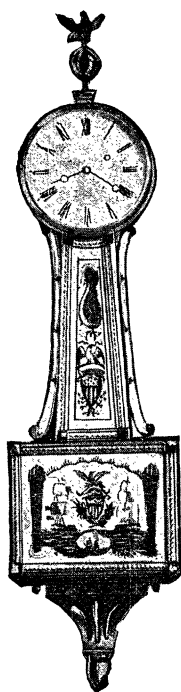
MOTOR SERVICE

Personal Attention to Funeral Detail

Res. 10 Quincy St. Telephone 993-R

THE OLD CLOCK

STILL
KEEPS
TIME



*ARE YOU KEEPING TIME
WITH THE TIMES?*

THE
SUCCESSFUL
OLD
BUSINESS
HOUSE

Has kept up to the times for years.
And why. Simply by telling the
story of what they have to sell
through the Business Headings in

THE CITY DIRECTORY

Broadway Savings Bank

522 ESSEX STREET

Deposits are placed on interest the first day of each month.

Dividend days May 1st and November 1st

\$2,000 Received on Any One Account and Allowed to Accumulate to
\$4,000 by Interest Additions.

5% Interest Paid since 1917

WILBUR E. ROWELL, President

L. E. LOCKE, Vice-President

TRUSTEES

W. E. Rowell
William D. Twiss
Joseph H. Stone
H. L. Sherman
Geo. W. Hamblet
W. M. Hastings
W. A. Pedler

C. O. Andrews
W. D. Hartshorne
Harry Wylde
K. G. Colby
J. E. Horne
R. H. Sugatt
L. E. Locke

W. D. Currier
G. Fred Russell
Jerome W. Cross
James H. Bride
A. B. Sutherland
J. T. Mercer
W. T. Dole

C. O. ANDREWS, Treasurer

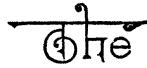
EDMUND B. CHOATE, Clerk of the Corporation and Trustees

FRED EASTMAN, Jr., Teller

SAFE DEPOSIT BOXES FOR RENT

Open from 9 to 1 o'clock

Saturday from 9 to 1, 2 to 4 and 7 to 8



Andover and North Andover

[MASSACHUSETTS]

DIRECTORY

VOLUME THREE

1920

CONTAINING AN

ALPHABETICAL LIST OF THE INHABITANTS AND
BUSINESS FIRMS, STREETS, TOWN OFFICIALS,
SOCIETY AND OTHER MISCELLANEOUS
MATTER FOR EACH TOWN

Compiled, Printed, Published and Bound by
The HENRY M. MEEK PUBLISHING CO.
12 Washington Square, Salem, Mass.

*Member of
Association of American
Directory Publishers*

Price - - \$5.00

Copyright 1920 by ALICE R. MEEK

TABLE OF CONTENTS

	Andover	North Andover	Miscella- neous
Abbreviations -----			40
Banks -----			387
Blocks Buildings etc -----	178	80	
Business Directory -----			44&387
Buyer's Guide -----			44&387
Calendar -----			38
Cemeteries -----	179	81	
Churches -----	294	172	
Clergymen -----			390
Clubs etc -----	294	172	
Expresses -----			392
Fire Alarm -----	291	169	
Fire Department -----	291	169	
Halls -----	178	80	
Hotels -----			398
Index to Advertisers -----			41
Inhabitants Names of -----	181	82	
Justices of the Peace -----			399
Lawyers -----			400
Library (Public) -----	293	172	
Notaries Public -----			402
Officers Town -----	290	168	
Physicians -----			404
Police Department -----	291	169	
Post Offices -----	296	174	
Railroad Stations -----	180	81	
School Department -----	292	171	
Societies etc -----	294	172	
Streets Avenues etc -----	175	77	

ABBREVIATIONS

Acct, accountant	mor wkr, morocco worker
appren, apprentice	mgr, manager
attend, attendant	mnfr, manufacturer
auto, automobile	M T S & S Co, M T Stevens & Sons Co
ave, avenue	mun, municipal
b, boards	mus tchr, music teacher
B, Boston	n, near
bdg, boarding	N E T & T Co, New England
bct, between	Telephone & Telegraph Co
bkkpr, bookkeeper	N R, North Reading
bldg, building	N W, North Wilmington
blk, block	opp, opposite
B M Co (And), Ballardvale Mills	P A, Phillips Academy
B M Co (No And), Brightwood Mnfg	pl, place
Co	P O, post office
B V, Ballardvale	pres, president
byd, beyond	prin, principal
B & M R R, Boston & Maine Railroad	prof, professor
c, corner	prop, proprietor
carp, carpenter	r, rear
cem, cemetery	rem, removed
ch, church	rep, repairer
clk, clerk	rl est, real estate
Co, company	rms, rooms
cond, conductor	R R, railroad
Cong, Congregational	S, Salem
ct, court	sales, salesman
div, division	sch, school
do, ditto	sec, section
D & F M Co, Dennis & Furber Mach	sol, solicitor
Co	sq, square
elec, electric	s r, summer residence
elect, electrician	st, street
emp, employee	sta, station
eng, engineer	stenog, stenographer
fore, foreman	su, suite
frt, freight	Stone, Stoneham
ft, foot	super, supervisor
gen, general	supt, superintendent
govt, government	ten, tender
h, house	ter, terrace
H, Haverhill	trav, travelling
hkpr, housekeeper	treas, treasurer
ins, insurance	U S A, United States Army
insp, inspector	U S N, United States Navy
inst, instructor	W A, West Andover
junc, junction	W H, Ward Hill
L, Lawrence	whf, wharf
lab, laborer	wid, widow
lea, leather	wkr, worker
mach, machinist	W U Tel Co, Western Union
Mal, Malden	Telegraph Co
	lem

INDEX TO ADVERTISERS

Allied Stores Company Inc Lawrence	455
Andover Coal Company Andover	466
Andover National Bank Andover	469
Andover Savings Bank Andover	469
Andover Steam Laundry Andover	467
Andrew F M & T E Lawrence	4
Arlington Trust Co Lawrence	19
Bay State National Bank Lawrence	head lines No. Andover
Bellevue Monumental Works Lawrence	8
Bennett E L Lawrence	26
Bevington Thos & Sons Lawrence	back cover
Breen John Lawrence	458
Bride Grimes & Co Lawrence	452
Broadway Savings Bank Lawrence	28
Bruckmann H Lawrence	13
Buckley T J Lawrence	10
Campbell's Flower Shop Lawrence	9
Cannon's Commercial College Lawrence	back cover
Caswell's The Lawrence	38
Clifford James H Co Lawrence	12
Colby Herbert N Lawrence	462
Colby W W & Son Lawrence	458
Couture Joseph H Lawrence	458
Cross Coal Company Lawrence	455
Cross Dry Goods Co Lawrence	463
Curran & Joyce Co Inc Lawrence	20
Daley John A & Co Lawrence	466
Doyle Hardware Co Lawrence	460
Doyle M J Lawrence	454
Eastman & Blyth Lawrence	head lines Buyers' Guide
Electric Shop Andover	470
Emmert Julius B Lawrence	451
Essex Mercantile Agency Andover	472
Essex Savings Bank Lawrence	5
Ewart James B Lawrence	456
Farley Awning & Decorating Co Lawrence	460
Ferguson John Andover	467
Ford W C & E J Lawrence	461
Gardner David M Lawrence	472
Gardner Fred Lawrence	foot lines
Gath Motor Co Lawrence	460
Globe Furniture Co Lawrence	461
Gregory & Brown Boston	17
Hall Walter G Inc Lawrence	6
Hardy Philip L Andover	470
Heinrich William Lawrence	459
Hill & Co Lawrence	463
Hobbs George N Lawrence	456

Horne Geo W Co Lawrence	471
Hub Furniture Co Lawrence	11
Hulme Samuel P Andover	468
Hurley John J Realty & Ins Co Lawrence	insert
Kenefick Owen A Lawrence	back cover
Knuepfer & Dimmock Lawrence	head lines
Lawrence Commercial School Lawrence	461
Lawrence Co-operative Bank Lawrence	456
Lawrence Evening Tribune The Lawrence	464
Lawrence Gas Co Lawrence	22
Lawrence Ice Co Lawrence	back bone and 453
Lawrence Market Co Lawrence	18
Lawrence Morris Plan Co Lawrence	452
Lawrence Motor Truck Co Lawrence	14
Lawrence Rubber Co Lawrence	460
Lawrence Savings Bank Lawrence	3
Lawrence Telegram Lawrence	454
Lawrence Trust Co Lawrence	front cover
Libby A H & Co Lawrence	462
Long James T & Co Lawrence	456
Mahoney Maurice J Lawrence	458
Malaney Thomas W Lawrence	back cover
Massachusetts Mutual Life Ins Co Lawrence	head lines Andover
Meek H M Publishing Co The Salem	16 and 27
Merchants Trust Co Lawrence	2
Merrimack Co-operative Bank Lawrence	insert
Merrimack Mutual Fire Ins Co Andover	468
Metzner Otto F Lawrence	457
Morse Walter I Andover	471
Morton Motor Equipment Co Lawrence	15
Oakland Granite Co Methuen	462
O'Mahoney M Co Lawrence	7
Peabody H N Lawrence	25
People's Ice Co Andover	470
Pitman J E Andover	466
Playdon J H Andover	470
Prescott H A Lawrence	back cover
Purcell & Kennedy Andover	467
Reid & Hughes Company Lawrence	21
Saunders & Gibbons Lawrence	464
Schmidt G A Lawrence	back cover
Shea John Lawrence No Andover and Methuen	453
Smith Horace Hale Lawrence	461
Snow Frank E Lawrence	24
Spurr's Shu-Fix Shop Lawrence	457
Stiegler E C & Co Lawrence	471
Sullivan James J Lawrence	464
Sullivan James J Lawrence	459
Sullivan Michael J Inc Lawrence	43
Sun American Pub Co Lawrence	451
Sutherland A B Company Lawrence	foot lines buyers' guide
Swindells W S & K Lawrence	472
Sylvester W H Lawrence	472

Tetreau C J Shoe Co Lawrence	back cover
Thornton & Crouch Lawrence	465
Tobin John Company Lawrence	457
Treat Hardware Corp Lawrence	23
Turner Center System Lawrence	455
Villeneuve M L & Co Lawrence	457
Wagland A H Lawrence	foot lines
Webster H K Company Lawrence	473
Weigel Alfred P Lawrence	465
Wheeler's Cleansers & Dyers Lawrence and Andover	463
Wilson Andrew Company Lawrence	back cover

Michael J. Sullivan, Inc.

HOUSE FURNISHERS

The LARGEST FURNITURE STORE in ESSEX COUNTY

Agents for

Whittall Rugs and Carpets
Globe Wernicke Bookcases
Columbia Talking Machines
Art Loom Tapestries
A—B Gas Stoves



Agents for

Crawford Ranges
Hallet and Davis Pianos
Hoosier Kitchen Cabinets
Baldwin Refrigerators
White Lily Electric Washers

The Finest Drapery Department in Lawrence

**218-222-226 Essex Street
Lawrence, Massachusetts**

Telephone 1910-1911

**PAINTERS
DECORATORS
PAPER HANGERS**

Eastman & Blyth
252 ESSEX STREET
LAWRENCE, MASS.

Wall Papers,
Paints, Oils, Varnish
Window Glass, Etc.

BUYER'S GUIDE

FOR ADVERTISERS IN LAWRENCE AND OTHER PLACES OUTSIDE OF THE ANDOVERS

The addresses refer to Lawrence unless otherwise specified
For complete Business Directory of Andover and North Andover see page 387

AGRICULTURAL SUPPLIES

Hall Walter G Inc 381 Essex Law	6
Thornton & Crouch 270 Essex Law	465
Treat Hardware Corp 582 Essex Law	23

ARCHITECTS

Smith Horace Hale Bay State Bldg Law	461
--------------------------------------	-----

ASPHALT SHINGLES

Horne Geo W Co 613 Common Law	471
-------------------------------	-----

ATTORNEYS AT LAW

Sullivan James J 301 Essex Law	464
--------------------------------	-----

AUCTIONEERS

Bevington Thomas & Sons 301 Essex Law	back cover
---------------------------------------	------------

AUTOMOBILE CURTAINS MADE AND REPAIRED

Prescott H A 138 Broadway Law	back cover
-------------------------------	------------

AUTOMOBILE GLOVES AND MITTENS

Prescott H A 138 Broadway Law	back cover
-------------------------------	------------

A. B. SUTHERLAND CO.

Almost an Acre of Selling Space Filled with the World's Best Productions
(44)

EASTMAN & BLYTH
WALL PAPERS AND ROOM MOULDINGS
252 Essex Street, Lawrence, Mass.

BUYERS' GUIDE

45

AUTOMOBILE SUPPLIES AND REPAIRS

Doyle Hardware Co 43 Hampshire Law	460
Gath Motor Co Broadway c Essex Law	460
Hall Walter G Inc 381 Essex Law	6
Lawrence Motor Truck Co 314-316 So Broadway Law	14
Star Super Tire Service Station Broadway c Methuen Law	25
Malaney Thomas W 546 Essex Law	back cover
Morton Motor Equipment Co Jackson and Oak Law	15

AUTOMOBILE TIRE REPAIRING

Malaney Thomas W 546 Essex Law	back cover
Morton Motor Equipment Co Jackson and Oak Law	15

AUTOMOBILE TIRES

Gath Motor Co Broadway c Essex Law	460
Lawrence Motor Truck Co 314-316 So Broadway Law	14
Lawrence Rubber Co 455 Essex Law	460
Malaney Thomas W 546 Essex Law	back cover
Morton Motor Equipment Co Jackson and Oak Law	15
Star Super Tire Service Station Broadway c Methuen Law	25

AUTOMOBILE TRUCKS

Lawrence Motor Truck Co 314-316 So Broadway Law	14
---	----

AUTOMOBILE TRUCKING

Doyle M J 398 Essex Law	454
-------------------------	-----

AUTOMOBILE TRUNKS AND BAGS

Prescott H A 138 Broadway Law	back cover
-------------------------------	------------

AUTOMOBILE AND CARRIAGE PAINTING

Snow Frank E West and Bradford Law	24
------------------------------------	----

AUTOMOBILES AND SUNDRIES

Gath Motor Co Broadway c Essex Law	460
Lawrence Motor Truck Co 314-316 So Broadway Law	14
Star Super Tire Service Station Broadway c Methuen Law	25

A. B. Sutherland Co.

The Largest and Best Equipped Store in Lawrence

Eastman & Blyth Painters and Decorators

252 Essex Street
LAWRENCE, MASS.
Telephone

46

BUYERS' GUIDE

AWNINGS TENTS CANOPIES

Farley Awning & Decorating Co 28 Valley Law	460
Lawrence Awning & Decorating Co 250 Broadway Law	376

BAKERS

Lawrence Market Co 534-536 Essex	18
----------------------------------	----

BANKS

Arlington Trust Co 305 Essex Law	19
Bay State National Bank 303 Essex Law	head lines No And
Broadway Savings Bank 522 Essex Law	28
Essex Savings Bank 296 Essex Law	5
Lawrence Co-operative Bank 301 Essex Law	456
Lawrence Morris Plan Co 204 Essex Law	452
Lawrence Savings Bank 255 Essex Law	3
Lawrence Trust Company 449 Essex Law	front cover
Merchants Trust Co 238 Essex Law	2
Merrimack Co-operative Bank 264 Essex Law	insert

BICYCLE DEALER

Hobbs George N 395 Broadway Law	456
---------------------------------	-----

BICYCLE SUPPLIES

Hobbs George N 395 Broadway Law	456
Lawrence Rubber Co 455 Essex Law	460

BLACKSMITH

Snow Frank E West and Bradford Law	24
------------------------------------	----

BOOK BINDERS

Meek H M Publishing Co 12 Wash sq Salem

BOOT AND SHOE DEALERS

Tetreau C J Shoe Company 517 Essex Law	back cover
--	------------

A. B. Sutherland Co.

THE MOST COMPLETE DEPARTMENT STORE IN LAWRENCE

Eastman & Blyth

252 ESSEX STREET,
LAWRENCE, MASS.

PAINTERS & DECORATORS

BUYERS' GUIDE

47

BOOT AND SHOE REPAIRING AND CUSTOM SHOES

Spurr's Shu-Fix Shop 150 Broadway Law 457

BOTTLERS OF CARBONATED BEVERAGES

Curran & Joyce Co Inc 433-443 Common Law 20

BRICK DEALERS

O'Mahoney M Co 481 Essex Law 7

BRICK MASONS

Heinrich William 15 Colby Law 459

BULBS

Thornton & Crouch 270 Essex Law 465

BUTTER CHEESE AND EGGS

Lawrence Market Co 534-536 Essex Law 18

Turner Centre Creamery 33-35-37 Winter Law 455

CANOPIES FOR RENT

Farley Awning & Decorating Co 28 Valley Law 460

CARPET CLEANING

Farley Awning & Decorating Co 28 Valley Law 460

Gardner David M 129 Lawrence Law 472

CARPETS AND RUGS

Globe Furniture Co 190-192 Essex Law 461

Stiegler E C & Co 195 Essex Law 471

Sutherland A B Co 309-321 Essex Law foot lines Buyers' Guide

Villeneuve M L & Co 503-507 Common Law 457

CARRIAGE REPAIRING

Snow Frank E West and Bradford Law 24

A. B. SUTHERLAND CO.

DRY GOODS, GROCERIES AND HOUSE FURNISHINGS

**PAINTERS
DECORATORS
PAPER HANGERS**

Eastman & Blyth
252 ESSEX STREET
LAWRENCE, MASS.

Wall Papers
Paints, Oils, Varnish
Window Glass, Etc.

48

BUYERS' GUIDE

CARRIAGE AND AUTOMOBILE PAINTING

Snow Frank E West and Bradford Law 24

CATERERS

Weigel Alfred P 188 Broadway Law 465

CEMENT BLOCKS

Heinrich William 15 Colby Law 459

CIVIL ENGINEER

Smith Horace Hale Bay State Bldg Law 461

CLEANSING AND DYEING

Wheeler's Cleansers and Dyers Essex Law and 10 No Main And 463

CLOTHING CLEANED PRESSED AND REPAIRED

Wheeler's Cleansers and Dyers Essex Law and 10 No Main And 463

COAL

Cross Coal Co 250 Essex and 25 Railroad Law 455
O'Mahoney M Co 481 Essex Law 7
Shea John 201 Lowell Law 453

COMMERCIAL COLLEGES

Cannon's Commercial College 301 Essex Law See back cover
Lawrence Commercial School 316 Essex Law 461

CONCRETE PAVERS

Heinrich William 15 Colby Law 459

CONTRACTORS

O'Mahoney M Co 481 Essex Law 7

A. B. Sutherland Co.

Almost an Acre of Selling Space Filled with the World's Best Productions

EASTMAN & BLYTH
WALL PAPERS AND ROOM MOULDINGS
252 Essex Street, Lawrence, Mass.

BUYERS' GUIDE 49

COOKED CHICKENS

Weigel Alfred P 188 Broadway Law 465

CO-OPERATIVE BANKS

Lawrence Co-operative Bank 301 Essex Law 456

Merrimack Co-operative Bank 264 Essex Law insert

CREAM AND MILK

Turner Centre Creamery 33-35-37 Winter Law 455

CURTAINS AND DRAPERIES

Clifford James H Co The 430 Essex Law 12

Gardner David M 129 Lawrence Law 472

Stiegler E C & Co 195 Essex Law 471

Sullivan Michael J Inc 218-226 Essex Law 42

Sutherland A B Co 309-321 Essex Law foot lines Buyers' Guide

Villeneuve M L & Co 503-507 Common Law 457

CUSTOM SHOES AND REPAIRING

Spurr's Shu-Fix Shop 150 Broadway Law 457

CUT FLOWERS

Thornton & Crouch 270 Essex Law 465

CUT GLASS

Schmidt G A 274-276 Essex Law back cover

CUTLERY

Hall Walter G Inc 381 Essex Law 6

Treat Hardware Corp 582 Essex Law 23

DECORATIONS FOR HALLS ETC

Farley Awning & Decorating Co 28 Valley Law 460

DECORATORS

Clifford James H Co (The) 430 Essex Law 12

Eastman & Blyth 252 Essex Law head lines Buyers' Guide

A. B. Sutherland Co.

The Largest and Best Equipped Store in Lawrence

Eastman & Blyth

Painters and Decorators

252 Essex Street
LAWRENCE, MASS.
Telephone

50

BUYERS' GUIDE

DEPARTMENT STORE

Reid & Hughes Company 225 Essex Law 21
Sutherland A B Co 309-321 Essex Law foot lines Buyers' Guide

DIAMONDS

Schmidt G A 274-276 Essex Law back cover

DIRECTORY PUBLISHERS

Meek H M Publishing Co 12 Wash sq (west) Salem

DRY AND FANCY GOODS

Cross Dry Goods Co 243-249 Essex Law 463
Reid & Hughes Company 225 Essex Law 21
Sutherland A B Co 309-321 Essex Law foot lines Buyers' Guide

DYERS AND CLEANSERS

Wheeler's Cleansers and Dyers Essex Law and 10 No Main And 463

ELECTRIC FIXTURES

Alexander C I & Sons 301 Essex Law 466
Daley John A & Co 441 Essex Law 466

ELECTRIC LAMPS

Clifford James H Co The 430 Essex Law 12

ELECTRIC SUPPLIES

Alexander C I & Sons 301 Essex Law 466
Daley John A & Co 441 Essex Law 466

ELECTRICAL CONTRACTORS

Alexander C I & Sons 301 Essex Law 466
Daley John A & Co 441 Essex Law 466

ELECTRICIANS

Alexander C I & Sons 301 Essex Law 466
Daley John A & Co 441 Essex Law 466

A. B. Sutherland Co.

THE MOST COMPLETE DEPARTMENT STORE IN LAWRENCE

Eastman & Blyth *Painters Decorators*

252 ESSEX STREET, LAWRENCE, MASS.

BUYERS' GUIDE

51

EMBALMERS

Bennett Edward L 283 Broadway Law	26
Breen John c Oak and Hampshire Law	458
Colby Herbert N 2 Mill Law	462
Colby W W & Son 276 Common Law	458
Couture Joseph H & Son 110-112 Franklin and 313 So B'way Law	458
Emmert Julius B 91-93 E Haverhill Law	451
Libby A H & Co 345a Broadway Law	462
Mahoney Maurice J 182 Hampshire Law	458

ENGRAVERS

Metzner Otto F 149 Essex Law	457
------------------------------	-----

FANCY GOODS

Cross Dry Goods Co 243-249 Essex Law	463
Reid & Hughes Company 225 Essex Law	21
Sutherland A B Co 309-321 Essex Law	foot lines Buyers' Guide

FERTILIZERS

Shea John 201 Lowell Law	453
Webster H K Co West Law	473

FISH DEALERS

Lawrence Market Co 534-536 Essex Law	18
--------------------------------------	----

FLORAL DESIGNS

Thornton & Crouch 270 Essex Law	465
---------------------------------	-----

FLORISTS

Campbell W C Bay State Bldg Law	9
Thornton & Crouch 270 Essex Law	465
Wagland A H 647 Broadway Law	foot lines

FLOWER POTS

Thornton & Crouch 270 Essex Law	465
---------------------------------	-----

A. B. SUTHERLAND CO.

DRY GOODS, GROCERIES AND HOUSE FURNISHINGS

**PAINTERS
DECORATORS
PAPER HANGERS**

Eastman & Blyth
252 ESSEX STREET
LAWRENCE, MASS.

Wall Papers
Paints, Oils, Varnish
Window Glass, Etc.

52

BUYERS' GUIDE

FUNERAL DESIGNERS

Campbell W C Bay State Bldg Law	9
Thornton & Crouch 270 Essex Law	465
Wagland A H 647 Broadway Law	foot lines

FUNERAL DIRECTORS

Bennett Edward L 283 Broadway Law	26
Breen John c Oak and Hampshire Law	458
Colby Herbert N 2 Mill Law	462
Colby W W & Son 276 Common Law	458
Couture Joseph H & Son 110-112 Franklin and 313 So B'way Law	458
Emmert Julius B 91-93 E Haverhill Law	451
Libby A H & Co 345a Broadway Law	462
Mahoney Maurice J 182 Hampshire Law	458

FURNITURE DEALERS

Buckley T J 284 Essex Law	10
Globe Furniture Co 190-192 Essex Law	461
Hub Furniture Co 474-478 Essex Law	11
Stiegler E C & Co 195 Essex Law	471
Sullivan Michael J Inc 218-226 Essex Law	42
Villeneuve M L & Co 503-507 Common Law	457

FURNITURE AND PIANO MOVING

Doyle M J 398 Essex Law	454
-------------------------	-----

FURS

Cross Dry Goods Co 243-249 Essex Law	463
--------------------------------------	-----

GARAGES BUILT

Heinrich William 15 Colby Law	459
-------------------------------	-----

GARDEN HOSE

Lawrence Rubber Co 455 Essex Law	460
----------------------------------	-----

GAS COMPANY

Lawrence Gas Co 370 Essex Law	22
-------------------------------	----

A. B. Sutherland Co.

Almost an Acre of Selling Space Filled with the World's Best Productions

EASTMAN & BLYTH
WALL PAPERS AND ROOM MOULDINGS
252 Essex Street, Lawrence, Mass.

BUYERS' GUIDE 53

GAS AND STEAM FITTERS

Swindells W S & K 198 Broadway Law 472

GINGER ALE

Curran & Joyce Co Inc 433-443 Common Law 20

GLOVES AND SLIPPERS DYED CLEANED AND REPAIRED

Wheeler's Cleansers and Dyers Essex Law and 10 No Main And 463

GRAIN DEALERS

Bruckmann H 158 So Broadway Law 13

Shea John 201 Lowell Law 453

Webster H K Co West Law 473

GRANITE WORKERS AND DEALERS

Bellevue Monumental Works 64-66 Manchester Law 8

Oakland Granite Co Granite off Oakland ave Methuen 462

GREENHOUSES

Thornton & Crouch 270 Essex Law 465

GRIST MILL

Webster H K Co West Law 473

GROCERS

Lawrence Market Co 534-536 Essex Law 18

HAND BAGS (Ladies)

Prescott H A 138 Broadway Law back cover

HARDWARE DEALERS

Doyle Hardware Co 43 Hampshire Law 460

Hall Walter G Inc 381 Essex Law 6

Shea John 201 Lowell Law 453

Treat Hardware Corp 582 Essex Law 23

A. B. Sutherland Co.

The Largest and Best Equipped Store in Lawrence

Eastman & Blyth 252 Essex Street
Painters and Decorators LAWRENCE, MASS
Telephone

54

BUYERS' GUIDE

HARNESSES AND LEATHER

Prescott H A 138 Broadway Law back cover

HAY GRAIN AND STRAW

Bruckmann H 158 So Broadway Law 13
Shea John 201 Lowell Law 453
Webster H K Co West Law 473

HOT WATER HEATING

Bride Grimes & Co 526 Essex Law 452
Swindells W S & K 198 Broadway Law 472

HOUSE FURNISHINGS

Buckley T J 284 Essex Law 10
Globe Furniture Co 190-192 Essex Law 461
Hub Furniture Co 474-478 Essex Law 11
Stiegler E C & Co 195 Essex Law 471
Sullivan Michael J Inc 218-226 Essex Law 42
Villeneuve M L & Co 503-507 Common Law 457

HOUSEHOLD LAUNDRY APPLIANCES

Alexander C I & Sons 301 Essex Law 466

ICE DEALERS

Lawrence Ice Co 301 Essex rm 716 Law back bone and 453

INFANTS WEAR

Cross Dry Goods Co 243-249 Essex Law 463

INSECTICIDES AND FUNGICIDES

Thornton & Crouch 270 Essex Law 465

INSURANCE

Andrew F M & T E 301 Essex rms 303-304 Law 4
Bevington Thomas & Sons 301 Essex Law back cover
Ewart James B 301 Essex Law 456
Hurley John J Realty & Ins Co 264 Essex Law insert
Mass Mutual Life Insurance Co 301 Essex rm 415-416 Law head lines And
Saunders & Gibbons 362 Essex rm 4 Law 464
Sullivan James J 316 Essex Law 459

A. B. Sutherland Co.

THE MOST COMPLETE DEPARTMENT STORE IN LAWRENCE

Eastman & Blyth Painters Decorators

252 ESSEX STREET, LAWRENCE, MASS.

BUYERS' GUIDE

55

INSURANCE COMPANIES

Connecticut General Life Insurance Co (Saunders & Gibbons) 362 Essex
rm 4 Law 464
Mass Mutual Life Insurance Co 301 Essex rm 415-416 Law head lines And
Sullivan James J 316 Essex Law 459

INVESTMENT CERTIFICATES

Lawrence Morris Plan Co 204 Essex Law 452

JEWELERS

Metzner Otto F 149 Essex Law 457
Schmidt G A 274-276 Essex Law back cover

JUSTICES OF THE PEACE

Andrew F M & T E 301 Essex rms 303-304 Law 4
Bevington Thomas & Sons 301 Essex Law back cover
Ewart James B 301 Essex Law 456
Ford W C & E J 629 Bay State Bldg Law 461
Sullivan James J 301 Essex Law 464

LADIES' SUITS AND FURNISHINGS

Cross Dry Goods Co 243-249 Essex Law 463
Reid & Hughes Company 225 Essex Law 21
Sutherland A B Co 309-321 Essex Law foot lines Buyers' Guide

LANDSCAPE GARDENING

O'Mahoney M Co 481 Essex Law 7

LAWYERS

Ford W C & E J 629 Bay State Bldg Law 461
Sullivan James J 301 Essex Law 464

LIME AND CEMENT

O'Mahoney M Co 481 Essex Law 7

A. B. SUTHERLAND CO.

DRY GOODS, GROCERIES AND HOUSE FURNISHINGS

**PAINTERS
DECORATORS
PAPER HANGERS**

EASTMAN & BLYTH
252 ESSEX STREET
LAWRENCE, MASS.

Wall Papers,
Paints, Oils, Varnish
Window Glass, Etc.

56

BUYERS' GUIDE

LISTS FURNISHED

Meek H M Publishing Co 12 Wash sq (west) Salem

LOAN COMPANY

Lawrence Morris Plan Co 204 Essex Law 452

MASONS

Tobin John Company 214 Broadway Law 457

MASONS' SUPPLIES

O'Mahoney M Co 481 Essex Law 7

MAUSOLEUMS

Bellevue Monumental Works 64-66 Manchester Law 8

MEN'S FURNISHINGS

Sutherland A B Co 309-321 Essex Law foot lines Buyer's Guide

MILK DEALERS

Turner Centre Creamery 33-35-37 Winter Law 455
Lawrence Market Co 534-536 Essex 18

MILL ARCHITECTS

Smith Horace Hale Bay State Bldg Law 461

MILL SUPPLIES

Doyle Hardware Co 43 Hampshire Law 460
Hall Walter G Inc 381 Essex Law 6
Treat Hardware Corp 582 Essex Law 23

MONEY TO LOAN

Lawrence Morris Plan Co 204 Essex Law 452

MONUMENTS AND TABLETS

Bellevue Monumental Works 64-66 Manchester Law 8
Oakland Granite Co Granite off Oakland ave Methuen 462

A. B. SUTHERLAND CO.

Almost an Acre of Selling Space Filled with the World's Best Productions

EASTMAN & BLYTH
WALL PAPERS AND ROOM MOULDINGS
252 Essex Street, Lawrence, Mass.

BUYERS' GUIDE 57

--
MORTGAGES

Bevington Thomas & Sons 301 Essex Law	back cover
Ewart James B 301 Essex Law	456
Hurley John J Realty & Ins Co 264 Essex Law	insert
Moison William H Agency 301 Essex rm 311-312 Law	377
Saunders & Gibbons 362 Essex rm 4 Law	464
Sullivan James J 316 Essex Law	459

MOTOR SUPPLIES

Malaney Thomas W 546 Essex Law	back cover
Morton Motor Equipment Co Jackson & Oak Law	15

MOULDINGS

Eastman & Blyth 252 Essex Law	head lines Buyer's Guide
-------------------------------	--------------------------

MUSIC AND MUSICAL INSTRUMENTS

Gardner Fred 379 Essex Law	foot lines
Knuepfer & Dimmock 254 Essex Law	head lines

NEWSPAPERS

Lawrence Evening Tribune 291 Essex Law	464
Lawrence Telegram 375 Essex Law	454
Sun American Pub Co 364 Essex	451

NOTARIES PUBLIC

Andrew F M & T E 301 Essex rms 303-304 Law	4
Bevington Thomas & Sons 301 Essex Law	back cover
Ford W C & E J 629 Bay State bldg Law	461
Sullivan James J 301 Essex Law	464

OILS GREASES ETC

Morton Motor Equipment Co Jackson & Oak Law	15
---	----

OPTICIANS

Caswell's The 519 Essex Law	38
-----------------------------	----

A. B. Sutherland Co.
The Largest and Best Equipped Store in Lawrence

Eastman & Blyth

252 Essex Street
LAWRENCE, MASS
Telephone

Painters and Decorators

58 BUYERS' GUIDE

OPTOMETRISTS

Caswell's The 519 Essex Law 38

ORGAN TUNER

Sylvester W H 10 Valley Law 472

PAINTERS

Tobin John Company 214 Broadway 457

PAINTERS' SUPPLIES

Allied Stores Company Inc 177 Broadway Law 466

Tobin John Company 214 Broadway Law 457

PAINTS OILS GLASS ETC

Allied Stores Company Inc 177 Broadway Law 466

Doyle Hardware Co 43 Hampshire Law 460

Eastman & Blyth 252 Essex Law head lines Buyer's Guide

Hall Walter G Inc 381 Essex Law 6

Tobin John Company 214 Broadway Law 457

Treat Hardware Corp 582 Essex Law 23

PAPER HANGERS

Clifford James H Co The 430 Essex Law 12

Eastman & Blyth 252 Essex Law head lines Buyer's Guide

Tobin John Company 214 Broadway Law 457

PAPER HANGINGS

Clifford James H Co The 430 Essex Law 12

Tobin John Company 214 Broadway Law 457

PHONOGRAPHS AND RECORDS

Gardner Fred 379 Essex Law foot lines

Hill & Co 89 Newbury Law 463

Hobbs George N 395 Broadway Law 456

Knuepfer & Dimmock 254 Essex Law head lines

Sullivan Michael J Inc 218-226 Essex Law 42

A. B. Sutherland Co.

THE MOST COMPLETE DEPARTMENT STORE IN LAWRENCE