

CLASSIFIED ADVERTISING FOR RATES CALL 1324

FOR SALE IN BALLARDVALE, Modern, six-room house and garage, 4 acres land, price \$5000.

KELVINATOR all porcelain; latest improvements like new \$50. Left in apartment in Andover.

RANGE AND OIL BURNER. Magic Hub Model 208, can be used for either oil or gas.

WANTED PIANO—for storage in nice home. Good care. No children.

FOR RENT THE ABERDEEN, exclusive apartments in Shawheen Village, tiled bathrooms with shower.

LOST Andover National Bank The following pass book issued by the Andover National Bank has been lost and applied for.

LEGAL NOTICES Commonwealth of Massachusetts PROBATE COURT ESSEX, SS.

LEGAL NOTICES Commonwealth of Massachusetts PROBATE COURT ESSEX, SS.

LEGAL NOTICES Commonwealth of Massachusetts PROBATE COURT ESSEX, SS.

LEGAL NOTICES Commonwealth of Massachusetts PROBATE COURT ESSEX, SS.

LEGAL NOTICES Commonwealth of Massachusetts PROBATE COURT ESSEX, SS.

LEGAL NOTICES Commonwealth of Massachusetts PROBATE COURT ESSEX, SS.

LEGAL NOTICES Commonwealth of Massachusetts PROBATE COURT ESSEX, SS.

LEGAL NOTICES Commonwealth of Massachusetts PROBATE COURT ESSEX, SS.

LEGAL NOTICES Commonwealth of Massachusetts PROBATE COURT ESSEX, SS.

LEGAL NOTICES Commonwealth of Massachusetts PROBATE COURT ESSEX, SS.

LEGAL NOTICES Commonwealth of Massachusetts PROBATE COURT ESSEX, SS.

LEGAL NOTICES Commonwealth of Massachusetts PROBATE COURT ESSEX, SS.

LEGAL NOTICES Commonwealth of Massachusetts PROBATE COURT ESSEX, SS.

LEGAL NOTICES Commonwealth of Massachusetts PROBATE COURT ESSEX, SS.

LEGAL NOTICES Commonwealth of Massachusetts PROBATE COURT ESSEX, SS.

LEGAL NOTICES Commonwealth of Massachusetts PROBATE COURT ESSEX, SS.

LEGAL NOTICES Commonwealth of Massachusetts PROBATE COURT ESSEX, SS.

LEGAL NOTICES Commonwealth of Massachusetts PROBATE COURT ESSEX, SS.

LEGAL NOTICES Commonwealth of Massachusetts PROBATE COURT ESSEX, SS.

LEGAL NOTICES Commonwealth of Massachusetts PROBATE COURT ESSEX, SS.

LEGAL NOTICES Commonwealth of Massachusetts PROBATE COURT ESSEX, SS.

STOWE SCHOOL NOTES

BRUCE ROOT Assemblies, FRANK KOZA DOROTHY CHRISTIE, Clubs, JOHN NUNEZ, Sports

ABRAHAM LINCOLN—There are few better examples for a junior high school student to follow than Abraham Lincoln's life.

LEGAL NOTICES Commonwealth of Massachusetts PROBATE COURT ESSEX, SS. To all persons interested in the estate of Mary Emma Locke late of Andover in said County, deceased.

BALLARDVALE Telephone 1007-M A valentine party will be held Saturday evening in the Methodist Church vestry.

4-H CLUB MEETS The Handy Improvement 4-H Club met Tuesday afternoon in the Kindergarten room of the Bradlee School.

VALENTINE PARTY Monday evening the members of the Handy 4-H Club entertained their mothers at a valentine party at the home of Mrs. Fred Fone on Clark Road.

GIRLS ORGANIZE CLUB Last Saturday, a club for younger girls was organized at the Branch Library.

WINS BOOK PRIZE The Louisa M. Alcott club meets regularly each Saturday at four o'clock.

CHURCH INCORPORATES The Union Congregational church voted to incorporate last night.

COLONIAL SUPPER Plans are nearly complete for the Colonial Supper to be given in the Union Congregational Church Vestry.

SHAWSHEEN VILLAGE Telephone 353-M Mrs. Carleton E. Shulze of Carisbrooke street entertained at her home recently Miss Mae Robertson.

A. B. SUTHERLAND CO.

KITCHEN FURNISHINGS DEPT. (FOURTH FLOOR)

SPECIAL FOR TODAY AND TOMORROW

20 GALLON ASH CAN Large size, extra heavy. Corrugated sides, hot dipped cover. Reg. \$1.50. Friday and Saturday \$1.00

GROCERY SPECIALS

GEISHA CRAB MEAT 4 for 90c. FANCY WALNUT MEATS } 1 lb. 59c—2 lbs. \$1.00. FANCY PECAN MEATS }

Mr. Raymond Mura. HERE'S A HINT FOR MOTHERS. ONE OF MY CUSTOMERS TOLD ME THE OTHER DAY, THAT HER TWO CHILDREN USED TO LOSE A LOT OF TIME FROM SCHOOL.

ANDOVER WOMEN KNOW GOOD BREAD

and that is the reason the majority of them always insist upon the loaf JUST LIKE THEIR OWN—the one loaf that LEADS all others in popularity in the Andovers...

20th Century Bread

COLONIAL THEATRE ANDOVER, MASS.

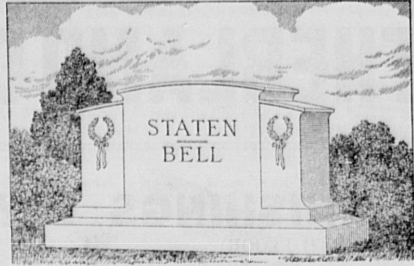
3 SHOWS DAILY—2:15, 6:15, 8:15 TODAY and TOMORROW WHIPSAW—Myrna Loy, Spencer Tracy 4:00; 6:25; 9:30

Roofs Shingled and Repaired. Winter's damage to your roof should be repaired now. Call us for estimates. GEO. W. HORNE CO. 633 COMMON ST., LAWRENCE

Own Your Own Home. Money available for Home Financing. The Co-operative Bank Plan gives you a Debt-Free Home easily and safely. LAWRENCE CO-OPERATIVE BANK 206 Bay State Building Lawrence, Massachusetts

Shawsheen Village. New England's finest community of MODERN HOMES. ANDOVER, MASSACHUSETTS. ADMIRATION BLDG. SHAWSHEEN VILLAGE

MEAGHER MEMORIALS ARE OUTSTANDING SPECIMENS OF ENDURANCE AND BEAUTY



JOHN MEAGHER & CO.

22 CENTRAL STREET PEABODY, MASS. Tel. PEABODY 565 or 508

FRANK A. WELCH Plumbing & Heating Contractor

FOR SALE—SEVEN-ROOM HOUSE, all conveniences, garage, three acres of land, on state road, two miles from town.

FRED E. CHEEVER NAT'L. BANK BLDG. Tel. 775 or 1098

Finance Board Sees Tax Rate of \$30.20

(Continued from page 1) The three hard-surfacing jobs in West Andover also were not approved.

DEPARTMENT APPROPRIATIONS

Table listing department appropriations for various town services like Assessors, Board of Selectmen, American Legion, etc.

Sewer Maintenance 5,700.00 Park and Playgrounds 4,650.00 Snow Removal 18,000.00

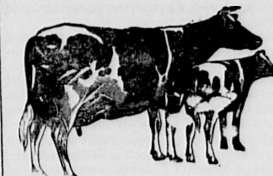
NEW ARTICLES

Articles filed after the Townsman went to press last week include: ARTICLE 35—To see if the town will authorize the Board of Public Works to extend the water main along Sunset Rock Road

WEST PARISH

The ladies of the West Church will hold an all days quilting meeting in the vestry Wednesday, February 19. Those attending are asked to bring lunch.

PLUMBING AND HEATING 32 Years' Experience in Andover CHARLES HUDON



Wild Rose Dairy MILK and CREAM Strictly an Andover Product

Marriage Intentions

George H. Newcomb, Chester street, and Ruth M. Webb, Tewksbury street.

Christ Church Notes

The Lenten services will begin on Ash Wednesday, February 26th. During the following weeks the Church School will have weekly services on Wednesdays at 4 o'clock.

MOTHERS' CLUB WHIST

The Andover Mothers' club will hold a whist party Wednesday at the home of Mrs. Albert Cole, Florence street.

FINAL CHANCE TO REGISTER

The final opportunity for new voters to register will be next Wednesday from noon to 10 at the town hall.

PLAN COSTUME PARTY

A Valentine costume party is to be held at the meeting of the Auxiliary next Thursday night.

ANSWERS TO SOBER TOWN PROBLEMS

These country lads sure knew their eggs. They all sold as many as numerically possible at seven for a cent, and the left-overs for three cents each.

Table listing market prices for Monarch Pitted Red Cherries, Swansdown Cake Flour, Bisquick, etc.

Fresh Fish and Oysters Every Friday

Table listing prices for Lamb Forequarters, Undercut Pot Roast, Fancy Fresh Fish, etc.

Table listing prices for Fresh Mushrooms, Green Peas, Juicy Florida Oranges, etc.

ANDOVER MARKET

1 Elm Street Tel. 1177

No More Coughing or Sleepless Nights

Mr. H. A. Allan, of Sarnia, Ontario, writes: "For years I suffered every Fall and Winter with a terrible cough. I have had many sleepless nights and coughed until tears ran, and my stomach ached."

Washington's Birthday

PREPARE TODAY Send us your SUIT or TUX, DRESS or GOWN

BATH ROBES and 50c DRESSING GOWNS 50c ARROW DYEING - CLEANSING 58 MAIN STREET Preferred for Reliability

The Bon Marche Merchandise of MERIT only

LOWELL - MASS.

Dollar Days

Friday and Saturday FEBRUARY 14-15 The Greatest BARGAIN Event of The Season

SAVINGS For All The Family and The Home!

Our Mid-Winter SALE of Furniture

Offers BEAUTY and COMFORT To Make Homes More LIVABLE!

JOHN H. GRECOE Jeweler and Watchmaker

ROY A. DANIELS Electrical Contractor

New England COKE

D & H Cone Cleaned Anthracite MOTOR-STOKERS AUTOMATIC COAL BURNING EQUIPMENT Fuel Service Guaranteed—Try Us This Season

B. L. McDonald Coal Co. Shingles Roofing Paper Building Papers Roof Paint Roof Cement Insulating Boards

Make Your Roof a BIRD Roof for Quality and Wear COMBINATION STORM and SCREEN DOORS—STORM WINDOWS J. E. PITMAN EST.

"February" says the Calendar, but the GAS KITCHEN RANGE BURNER says "June".

COME IN TODAY AND GET THE FACTS ABOUT THIS CONVENIENT, SURPRISINGLY ECONOMICAL, HOME COMFORT AID.

Lawrence Gas & Electric Company Gas burner fully installed in your coal stove, \$4. down, \$1.50 a month for 18 months.

TRY IT—Before you buy any truck

Let the 1936 Ford V-8 Truck prove itself on YOUR job without cost or obligation to you!

ONE "on-the-job" test will tell you more about the Ford V-8 Truck for 1936 than a thousand sales claims.

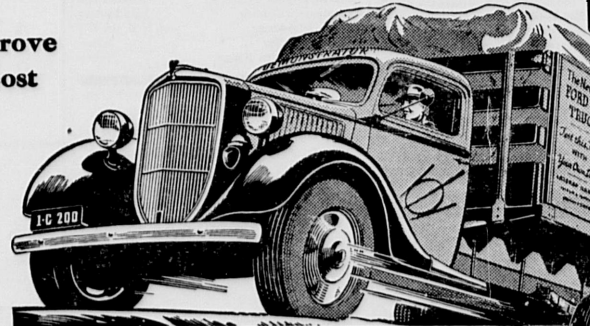
This test gives you a chance to see the Ford V-8 Truck at work hauling your own loads over your regular routes.

You are invited to test a Ford V-8 Truck or Commercial Car on your job and check the results. There is no obligation, just 'phone your nearest Ford Dealer—he will make all arrangements.

FORD V-8 TRUCKS FOR 1936

\$500

AND UP, F. O. B. DETROIT— Easy terms through Universal Credit Co.—the Authorized Finance Plan.



PROVED IN '35, NOW BETTER THAN EVER, THE FORD V-8 TRUCK GIVES YOU:

- 80 HORSEPOWER V-8 ENGINE—downdraft carburetion—exhaust valve seat inserts—improved crankcase ventilation. IMPROVED COOLING—with larger, 19-in. fan—exhaust type hood louvers—radiator of flat tube and fin construction. STRONGER FULL-FLOATING REAR AXLE—heavier shafts, new cone locks between shaft bolts and wheel hub. FULL TORQUE-TUBE DRIVE—with radius rods for positive axle and wheel alignments, longer tire wear, surer braking. RIB-COOLED BRAKES—self-centering shoes, reinforced cast alloy non-scoring drums.

NEW NEEDLE ROLLER BEARINGS for universal joints.

HEAVY-DUTY CLUTCH—centriforce action increases capacity from 100% to 400% at high engine speeds—large diameter plates for long life—pedal pressure reduced 25% at starting and shifting speeds.

EXTRA HEAVY DUTY FRAME—high carbon pressed steel, with full channel depth cross members.

CORRECT LOAD DISTRIBUTION—more room in cab—more loading space ahead of rear axle.

GREATLY REDUCED MAINTENANCE with low cost engine and parts exchange plan.