

Nov/Dec 2018



MEMORIAL HALL LIBRARY

Adult Events @ MHL

At a Glance

Book Discussion
November 13

Death Cafe
November 14

Holiday Book Sale
Silhouettes
December 1

Button Necklaces
December 5

Genealogy Classes
November 15

December 6

Pub Trivia
December 11

Programs are subject to change. Call 978-623-8430 or visit www.mhl.org in advance.

Stephen Porter: The Romantic Piano Music of Chopin and Liszt

Sunday, November 18 at 2:30pm

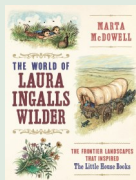
The acclaimed classical pianist has appeared as a soloist and played with orchestras and chamber music groups worldwide. He serves on the faculty of Phillips Academy. Sign up <https://mhl.org/calendar>. Sponsored by the Friends of MHL.



The World of Laura Ingalls Wilder

Tuesday, November 6 at 7:00pm

Garden writer, Marta McDowell followed the trail of the Little House series and shares fascinating details about Laura Ingalls Wilder and the plants, creatures, and landscapes so integral to her stories. Books will be available. Sign up at <https://mhl.org/calendar>. Sponsored by the Friends of MHL.



The Shamrock Genealogist

Saturday, November 10 at 2:00pm

International speaker and blogger, Melanie McComb, will show you how to use new technologies and online communities to break through Irish brick walls. Learn tips for thinking outside the box. Sign up at <https://mhl.org/calendar>.

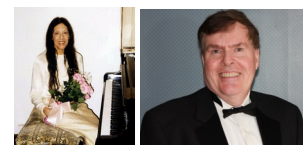
Melanie McComb
THE SHAMROCK
GENEALOGIST



Terri Kelley & Bill Donelan

Sunday, December 9 at 2:30pm

The talented Andover piano/vocal duo will perform American songs from 1850-1970, along with a few seasonal favorites. Sign up at <https://mhl.org/calendar>.



The Mother Connection 21st Annual Preschool Fair

Thursday, November 8 from 5:30-7:30pm in Memorial Hall

November & December Events & Groups



Book Discussion

Tuesday, November 13, 7:00pm

Led by Michael Eatman & Dr. Julie Mavity Maddalena. All are welcome, even if you've not read the book. Sign up at <https://mhl.org/calendar>. Sponsored by Courageous Conversations, SURJ, MHL & the Social Justice Coalition.

Death Cafe

Wednesday, November 14

Join other adults for our twelfth evening of open, lively, & insightful discussion about death. Sign up at <https://mhl.org/calendar>. Refreshments at 6:30pm; program starts at 7:00pm. Hosted by local resident, Richard Davis. More at deathcafe.com



Genealogy @MHL

One Hour Classes at 7:00pm

Thursday, 11/15 - FamilySearch

Thursday, 12/6 - AmericanAncestors

Sign up at <https://mhl.org/calendar>.

DNA Genealogy Working Group

Monday, 11/19, 7:00pm, Activity Room

Limited to those who've completed a DNA test & want to share ideas with other DNA genealogy enthusiasts. Sign up at <https://mhl.org/calendar>.

Discover Your Past Genealogy Club

Thursdays, 11/8 & 12/13, 10:00-11:00am



Make@MHL: Button Necklace

Wednesday, 12/5, 10-11:30am

With staff members Vicki Murphy & Gerry Deyermond. All supplies included. Space is limited. Sign up at <https://mhl.org/calendar>. Meet at Reference Desk.



Friends' Holiday Book Sale

Saturday, 12/1, 9:00am-3:00pm

Gift quality books for all ages, including seasonal favorites, fiction, nonfiction, and oversized books.



Silhouette Portraits by Jean Comerford

Saturday, 12/1, 9:00am-4:00pm

Hand cut silhouettes make great gifts. Email straina@mhl.org or call 978-623-8451. \$35 per silhouette, \$15 per copy.

Pub Trivia at Andolini's

Tuesday, December 11 at 7:00pm

\$50 cash prize to winning team!



Tech@MHL: Drop-in Help

Wednesdays, 10:00-10:45am

Stop by the Reference Desk

11/7 & 11/21 & 12/5 & 12/19

Bring your charged device, passwords and logins.



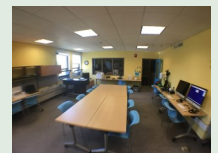
Make@MHL Makerspace

Tech Tuesdays - 10:00-11:00am

11/6, 11/13, 11/20, 11/27

12/4, 12/11, 12/18

Sign up at <https://mhl.org/calendar>.



**COMPUTER
USERS GROUP**

**November 5 & December 10
Mondays, 1:30-3:00pm, Activity Rm**

**ADULT BOARD
GAMES @ MHL**

**Sunday, November 4, 1:15-4:30pm
Monday, December 3, 5:30-8:30pm**

Conversational English Group

Mondays, 10:00am-noon, Memorial Hall

November 5, 26 & December 3, 10, 17

Career Networking Group

Thursdays, 10:00-11:30am, Friends Alcove 1

November 8 & December 6 & 20

Sign up for events at <https://mhl.org/calendar> or call 978-623-8430